

SIZES 2-20
in cup sizes A-H

CHARM
PATTERNS 

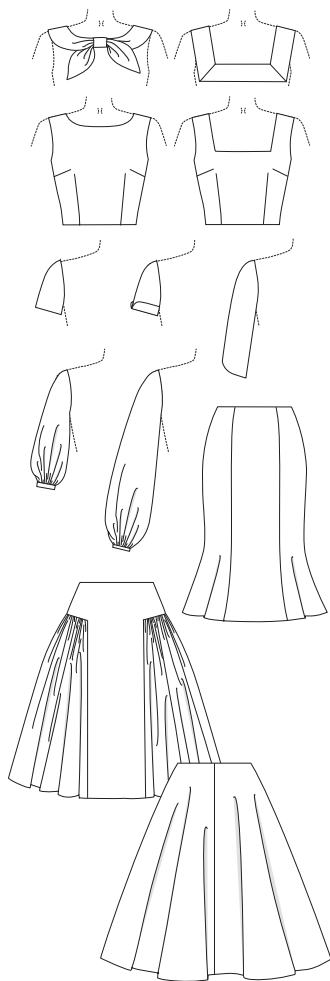


72
DRESSES
IN ONE
PATTERN!

2 BODICES
AND COLLARS
6 SLEEVES
3 SKIRTS

Night and Day Dress

THE PATTERN THAT TAKES YOU
FROM INGÉNUE TO FEMME FATALE



This is the most versatile dress pattern you'll ever own. This vintage-inspired design has two bodices, three skirts, six sleeve styles, and two collars, giving you 72 dress designs in one package. The "Choose Your Own Adventure" style of instructions lets you decide how you'll finish your dress—neckline facing, all-in-one facing, partial lining, or full lining. Be the heroine of your own sewing escapade!

solo, Gertie

SIZE CHART: Separate pattern pieces are included for A–H cup sizes.

	2	4	6	8	10	12	14	16	18	20
High Bust	29 in 73.7 cm	31 in 78.7 cm	33 in 83.8 cm	35 in 88.9 cm	37 in 94 cm	39 in 99 cm	41 in 104.1 cm	43 in 109.2 cm	45 in 114.3 cm	47 in 119.4 cm
Bust A cup	30.5 in 77.5 cm	32.5 in 82.5 cm	34.5 in 87.6 cm	36.5 in 92.7 cm	38.5 in 97.8 cm	40.5 in 102.9 cm	42.5 in 108 cm	44.5 in 113 cm	46.5 in 118.1 cm	48.5 in 123.2 cm
Bust B/C cup	31 in 78.7 cm	33 in 83.8 cm	35 in 88.9 cm	37 in 94 cm	39 in 99 cm	41 in 104.1 cm	43 in 109.2 cm	45 in 114.3 cm	47 in 119.4 cm	49 in 124.5 cm
Bust D/DD cup	32 in 81.3 cm	34 in 86.4 cm	36 in 91.4 cm	38 in 96.5 cm	40 in 101.6 cm	42 in 106.7 cm	44 in 111.8 cm	46 in 116.8 cm	48 in 121.9 cm	50 in 127 cm
Bust F/G cup	33 in 83.8 cm	35 in 88.9 cm	37 in 94 cm	39 in 99 cm	41 in 104.1 cm	43 in 109.2 cm	45 in 114.3 cm	47 in 119.4 cm	49 in 124.5 cm	51 in 129.5 cm
Bust H cup	34 in 86.4 cm	36 in 91.4 cm	38 in 96.5 cm	40 in 101.6 cm	42 in 106.7 cm	44 in 111.8 cm	46 in 116.8 cm	48 in 121.9 cm	50 in 127 cm	52 in 132.1 cm
Waist	24 in 61 cm	26 in 66 cm	28 in 71.1 cm	30 in 76.2 cm	32 in 81.3 cm	34 in 86.4 cm	36 in 91.4 cm	38 in 96.5 cm	40 in 101.6 cm	42 in 106.7 cm
Hips	36 in 91.4 cm	38 in 96.5 cm	40 in 101.6 cm	42 in 106.7 cm	44 in 111.8 cm	46 in 116.8 cm	48 in 121.9 cm	50 in 127 cm	52 in 132.1 cm	54 in 137.2 cm

FABRIC NOTES

Light- to medium-weight wovens: cottons like poplin, shirting, sateen, eyelet, and lawn; silks with body like dupioni and shantung; linen and linen blends; brocade; wools like crepe, double crepe, suiting, and flannel; silk/wool blends.

For the long and short bishop sleeves: main dress fabrics (see above); also contrast sheers like tulle, flocked tulle, beaded fabrics, organza, organdy.

For the lining (optional): light- to medium-weight cottons and lining fabrics.

Please see Finished Measurement Chart and Yardage Charts in instruction booklet.

SUPPLIES:

- dress fabric (see yardage chart in pattern)
- lining fabric (optional; see yardage chart in pattern)
- thread to match fabric
- 22-in (56 cm) all-purpose zipper
- lightweight fusible interfacing. Ask for lightweight woven, tricot, or weft interfacing (see yardage chart in pattern)
- about 1/4 yd (0.2 m) fusible interfacing or 1 1/4-in-wide (3 cm) fusible stay tape to stabilize zipper opening

SKILL LEVEL:



charmpatterns.com

© 2021 Charm Patterns by Gertie

Front envelope photographs

© 2020 Shameless Photography.

Technical illustrations © 2018 Robin Kataja-Blair

MADE IN THE USA

CP103

CONTENTS

INSTRUCTIONS [NightandDayDressInstructions.pdf](#)

- Introduction 4**
- Design Your Dress **6**
- Design Options **7**
- Pattern Pieces **8**
- Fabric Notes **9**
- Required Yardage & Cutting Layouts **10**
- A Guide to Fitting Your Dress **16**

- Sewing Instructions 20**
- Before Sewing **21**
- Bodices **22**
- Collars **25**
- Preparing Facing/Bodice Lining **29**
- Sleeveless Bodice Finishing **30**
- Finishing Neckline **31**
- Finishing Armholes (Sleeveless Dress) **33**
- Sleeves **34**
- Skirts **43**
- Joining Bodice to Skirt, Fully Lined Dress **50**
- Joining Bodice to Skirt, Unlined Dress **51**
- Joining Bodice to Skirt, Bodice Lining Only **51**
- Inserting Zipper **52**
- Hand-Stitching Inside the Dress **53**
- Hemming the Dress **55**

- Take Your Dress to the Next Level 56**
- Using Contrast Fabrics **57**
- Sewing with Stripes and Plaids **57**
- Sailor Trim **59**
- Sewing with Beaded Fabrics **60**
- Sewing with Scallop-Edge Fabrics **61**
- Sewing with Border Prints **61**
- More Design Ideas **62**

- Glossary 64**

- Pattern Pieces Printing Index 69**

- Pattern Pieces Tiling Maps 70**

PATTERN PIECES [NightandDayDressPatternTiled.pdf](#)

See the Pattern Pieces Printing Index for each pattern piece's page number to print them individually.

AO SHEETS [NightandDayDressPatternAO.pdf](#)

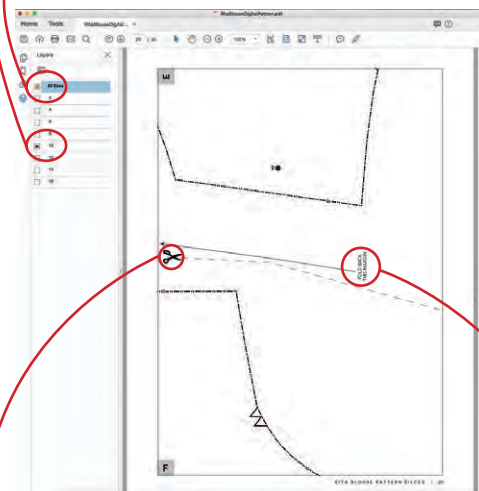
HOW TO USE THIS PATTERN

The pattern pieces are tiled so you can print them on Letter (8½ x 11) or A4 size paper. You can also send the A0 pattern sheet PDF to a local or online printer (like www.pdfplotting.com) to print on large sheets (36" x 48" for U.S. or A0 for international).

This pattern includes size layers. To get the best results, open either the Tiled or A0 pattern pieces PDF in Acrobat Reader. (You can download Reader for free at Get.Adobe.com/reader.)

Open the Layers Palette (View>Show/Hide>Navigation Panes>Layers) and hide all of the layer(s) except for the ones you want to print by clicking on the eye icon.

The All Sizes layer has general pattern information and will always print.



WORKING WITH THE TILED PIECES

Go to File>Print and change the page range to the pages you need for the pieces you've chosen (see Pattern Pieces Printing Index). Make sure the Page Sizing settings to 100% or Actual Size. Test this after printing by measuring the 1" test box on the first page of the bodice pattern pieces.

Cut apart any pattern pieces that share a page by cutting on the gray long dashed lines. Then fold back the page margins on each page as directed.

Tape the pages together, butting up the folded page edges with the gray margin lines, matching up the letters in gray boxes.



INTRODUCTION



This pattern takes a “Choose Your Own Adventure” approach to sewing (that was a series of books I was obsessed with as a little girl). This means that you have many, many options. First, you can choose your design elements from the list on p. 7; there are 72 possible dress combinations! (Check out the endpapers for line drawings of every possible dress design.) Next, choose your finishing: neckline facing, for dresses with sleeves; all-in-one-facing, for sleeveless dresses; and a bodice lining or a full lining.

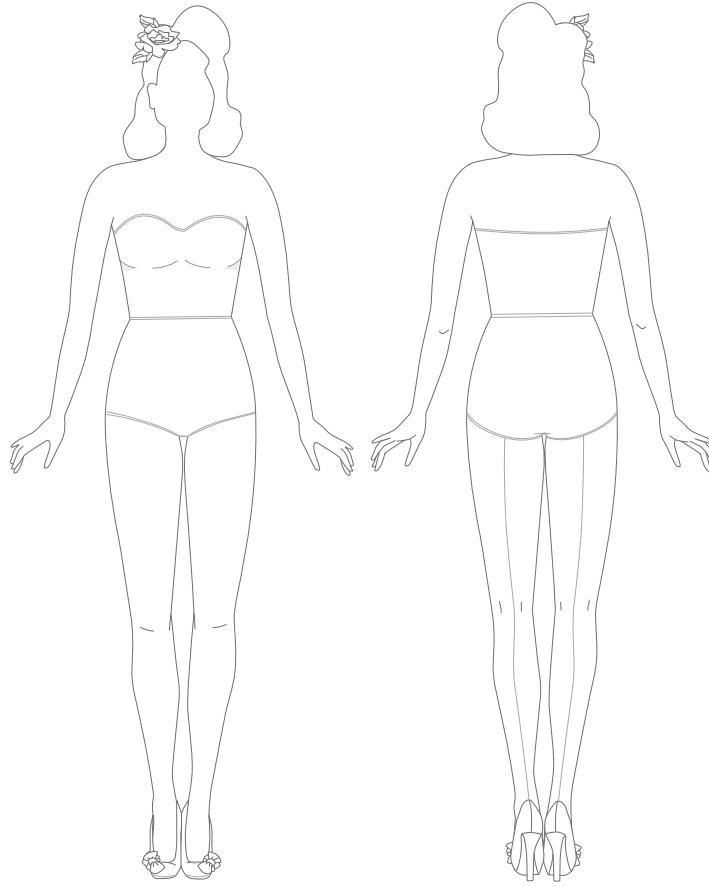
The instructions are divided into units—almost like chapters. At the end of each unit, there is an instruction telling you where to go next, depending on what kind of dress you’re making and what finishing options you’ve selected. For instructions on using different fabrics and trims, see “Take Your Dress to the Next Level,” p. 56.

I hope this process will help you take charge of your sewing so that you feel empowered to make your own choices when it comes to dressmaking, rather than relying on a one-size-fits-all approach. Above all, I hope you enjoy the adventure!

xoxo, Gertie

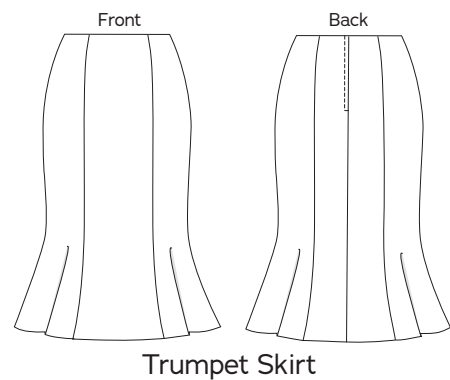
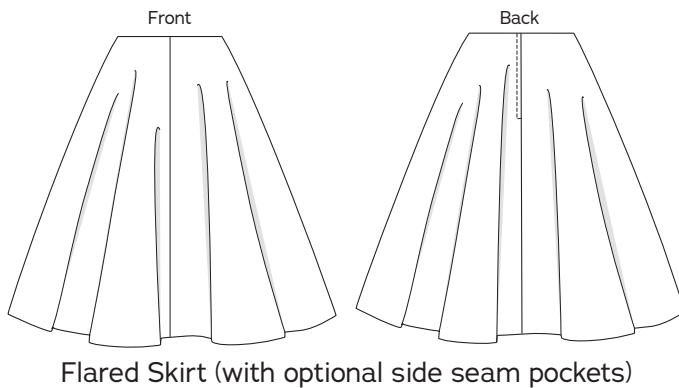
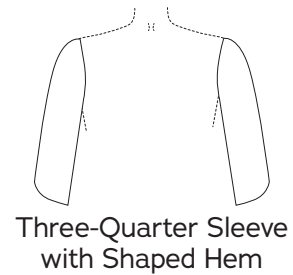
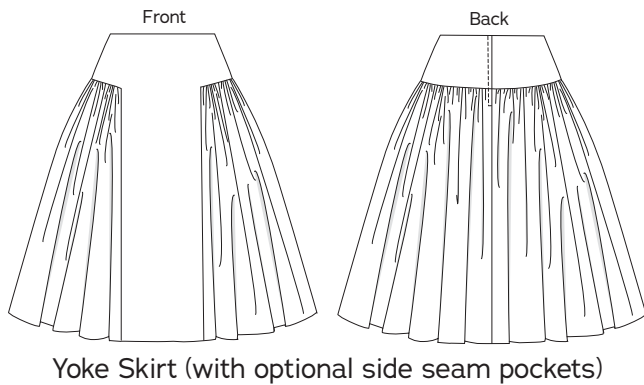
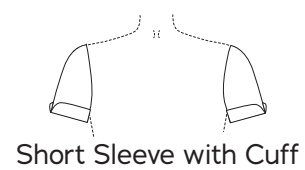
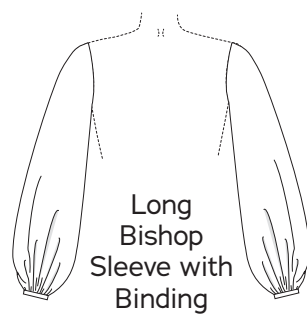
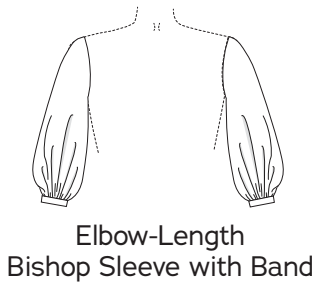
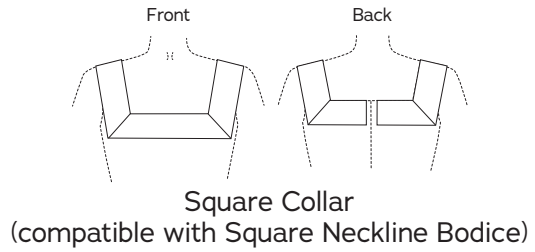
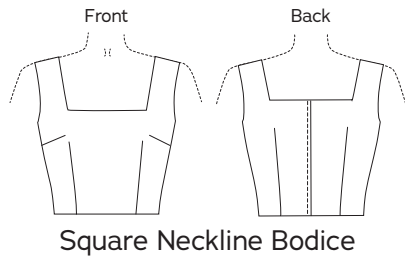
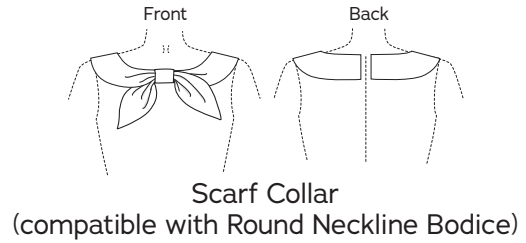
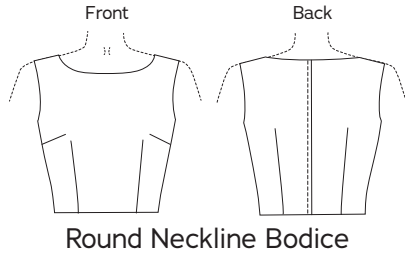
DESIGN YOUR DRESS

Use this worksheet to sketch, plan, and estimate yardage for your dress!



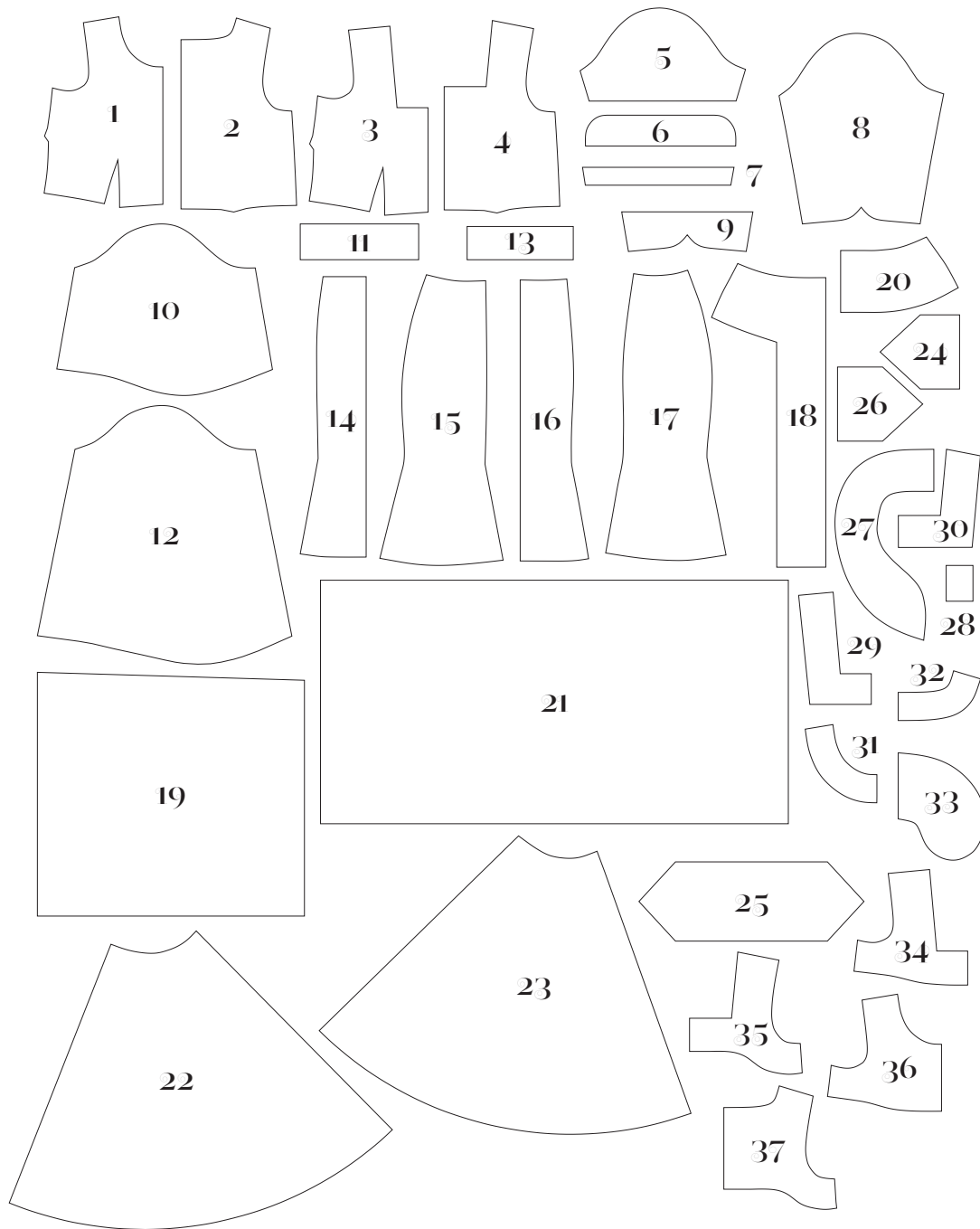
OPTION	PIECE #s	YARDAGE	FABRIC
Bodice			
Collar			
Sleeve			
Skirt			
NOTES:			

DESIGN OPTIONS



PATTERN PIECES

- 1. Round Neckline Bodice Front**
Cut 1 fabric on fold, 1 lining on fold (optional)
- 2. Round Neckline Bodice Back**
Cut 2 fabric, 2 lining (optional)
- 3. Square Neckline Bodice Front**
Cut 1 fabric on fold, 1 lining on fold (optional)
- 4. Square Neckline Bodice Back**
Cut 2 fabric, 2 lining (optional)
- 5. Short Sleeve**
Cut 2 fabric
- 6. Short Sleeve Cuff**
Cut 4 fabric, 2 interfacing
- 7. Short Sleeve Facing**
Cut 2 fabric, 2 interfacing
- 8. Three-Quarter Sleeve**
Cut 2 fabric
- 9. Three-Quarter Sleeve Facing**
Cut 2 fabric, 2 interfacing
- 10. Elbow Length Bishop Sleeve**
Cut 2 fabric
- 11. Elbow Length Bishop Sleeve Band**
Cut 2 fabric, 2 interfacing
- 12. Long Bishop Sleeve**
Cut 2 fabric
- 13. Long Bishop Sleeve Binding**
Cut 2 fabric
- 14. Trumpet Skirt Front**
Cut 1 fabric on fold, 1 lining on fold (optional)
- 15. Trumpet Skirt Side Front**
Cut 2 fabric, 2 lining (optional)
- 16. Trumpet Skirt Back**
Cut 2 fabric, 2 lining (optional)
- 17. Trumpet Skirt Side Back**
Cut 2 fabric, 2 lining (optional)
- 18. Yoke Skirt Center Front**
Cut 1 fabric on fold, 1 lining on fold (optional)
- 19. Yoke Skirt Lower Front**
Cut 2 fabric, 2 lining (optional)
- 20. Yoke Skirt Back Yoke**
Cut 2 fabric, 2 lining (optional)
- 21. Yoke Skirt Lower Back**
Cut 2 fabric, 2 lining (optional)
- 22. Flared Skirt Front**
Cut 2 fabric, 2 lining (optional)
- 23. Flared Skirt Back**
Cut 2 fabric, 2 lining (optional)
- 24. Square Collar Front**
Cut 1 fabric on fold, 1 interfacing on fold
- 25. Square Collar Side**
Cut 2 fabric, 2 interfacing
- 26. Square Collar Back**
Cut 2 fabric, 2 interfacing
- 27. Scarf Collar**
Cut 4 fabric, 2 interfacing
- 28. Scarf Collar Knot**
Cut 2 fabric, 1 interfacing
- 29. Square Neckline Facing Front**
Cut 1 fabric on fold, 1 interfacing on fold
- 30. Square Neckline Facing Back**
Cut 2 fabric, 2 interfacing
- 31. Round Neckline Facing Front**
Cut 1 fabric on fold, 1 interfacing on fold
- 32. Round Neckline Facing Back**
Cut 2 fabric, 2 interfacing
- 33. Pocket**
Cut 4 fabric
- 34. Square Neckline All-in-One Facing Front**
Cut 1 fabric on fold, 1 interfacing on fold
- 35. Square Neckline All-in-One Facing Back**
Cut 2 fabric, 2 interfacing
- 36. Round Neckline All-in-One Facing Front**
Cut 1 fabric on fold, 1 interfacing on fold
- 37. Round Neckline All-in-One Facing Back**
Cut 2 fabric, 2 interfacing



FABRIC NOTES

This pattern was designed for woven fabrics (see recommendations on the envelope). You may use stretch woven (fabric with spandex/Lycra, like stretch sateen), but in this case, you may wish to orient the stretch horizontally around the body (not lengthwise) and take in the side seams $\frac{1}{4}$ inch (6 mm) to $\frac{1}{2}$ inch (1.3 cm) to account for the stretch and achieve a body-hugging fit. This pattern is not recommended for knit fabrics.


REQUIRED YARDAGE & CUTTING LAYOUTS


Note: all pattern pieces are shown in a “without nap” layout. You may need additional yardage for directional prints, stripes, plaids, and other prints that need to be matched across seamlines.

Round Neckline Bodice, Fabric and Lining (1, 2)

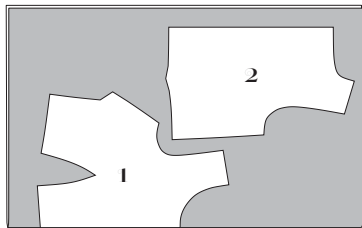
	Sizes 2-10	Sizes 12-20
45 in	1 yd 0.9 m	1¼ yd 1.1 m
60 in	¾ yd 0.7 m	¾ yd 0.7 m

KEY TO LAYOUTS

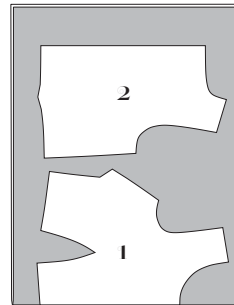
 Right side of pattern piece

 Wrong side of pattern piece

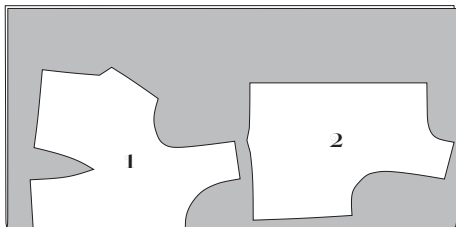
Be sure to note whether the pieces are cut on a double or single layer of fabric. For a double layer, there will be a note indicating FOLD on the layout.



45 in, sizes 2-10



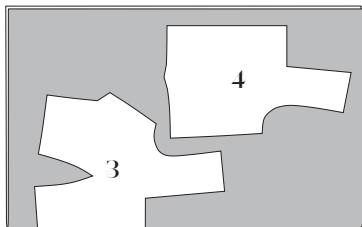
60 in, all sizes



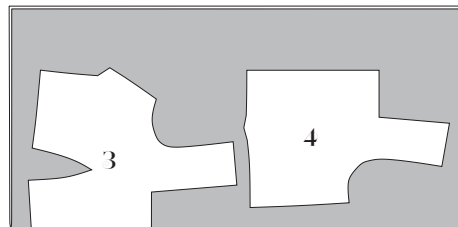
45 in, sizes 12-20

Square Neckline Bodice, Fabric and Lining (3, 4)

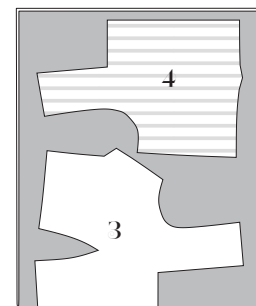
	Sizes 2-10	Sizes 12-20
45 in	1 yd 0.9 m	1⅜ yd 1.3 m
60 in	¾ yd 0.7 m	¾ yd 0.7 m



45 in, Sizes 2-10



45 in, Sizes 12-20

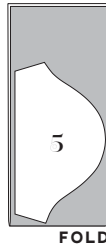


60 in, all sizes

Short Sleeve, Fabric (5)

All sizes

45 in	3/8 yd
60 in	0.3 m



Short Sleeve Cuff, Interfacing (6, 7)

All sizes

60 in	5 in 12.7 cm
-------	-----------------



Short Sleeve Cuff, Fabric (6, 7)

Sizes 2-10 Sizes 12-20

45 in	1/4 yd	1/4 yd
60 in	0.2 m	0.2 m

45 in,
all
sizes



60 in,
all
sizes

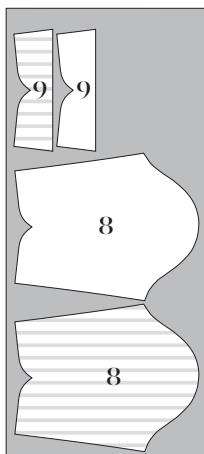


Three-Quarter Sleeve, Fabric (8, 9)

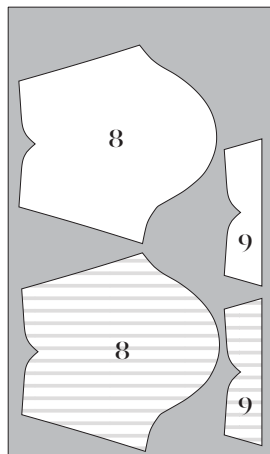
(8, 9)

Sizes 2-10 Sizes 12-20

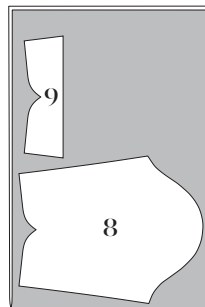
45 in	5/8 yd	3/4 yd
60 in	0.6 m	0.7 m



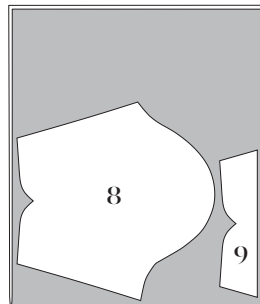
45 in, sizes 2-10



45 in, sizes 12-20



60 in, sizes 2-10



60 in, sizes 12-20

Three-Quarter Sleeve, Interfacing (9)

All sizes

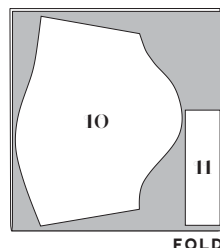
60 in	1/4 yd 0.2 m
-------	-----------------



Elbow-Length Bishop Sleeve, Fabric (10, 11)

Sizes 2-10 Sizes 12-20

45 in	5/8 yd	3/4 yd
60 in	0.6 m	0.7 m



Elbow-Length Bishop Sleeve, Interfacing (11)

Sizes 2-10 Sizes 12-20

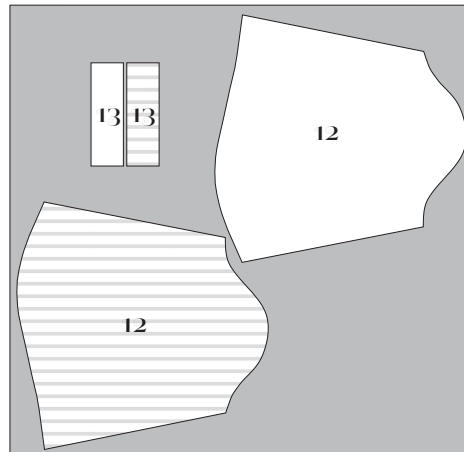
60 in	1/8 yd 0.1 m	1/8 yd 0.1 m
-------	-----------------	-----------------



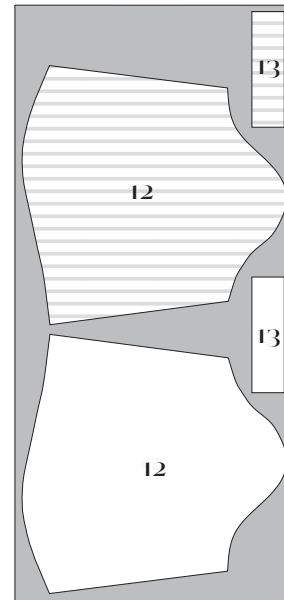
Long Bishop Sleeve, Fabric

(12, 13)
Sizes 2-10 **Sizes 12-20**

45 in	1 ³ / ₈ yd 1.3 m	1 ¹ / ₂ yd 1.4 m
60 in	3 ³ / ₄ yd 0.7 m	7 ⁷ / ₈ yd 0.8 m



45 in, all sizes



60 in, all sizes

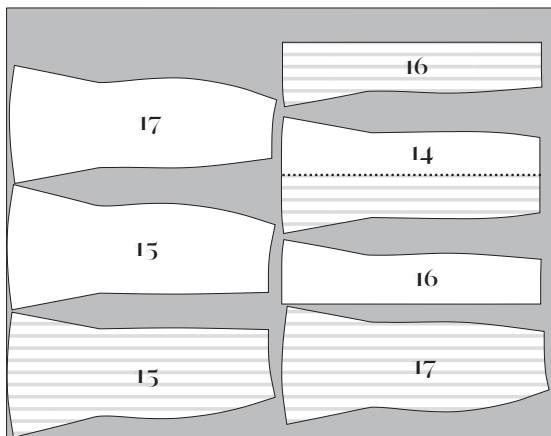
Trumpet Skirt, Fabric and Lining

(14, 15, 16, 17)

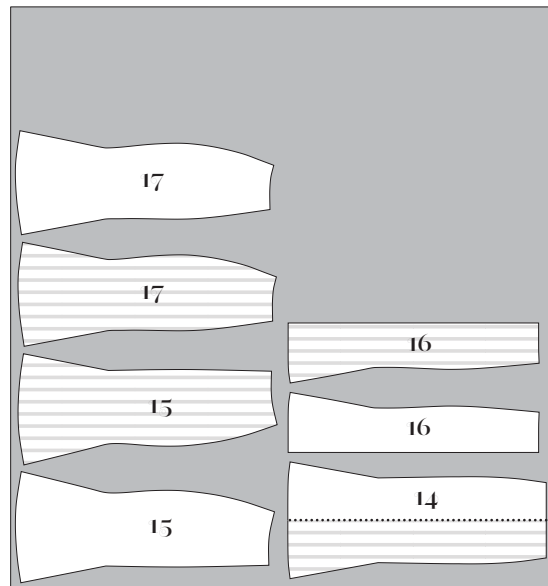
Sizes 2-10 **Sizes 12-20**

45 in	1 ¹ / ₂ yd 1.4 m	1 ³ / ₄ yd 1.6 m
60 in	1.4 m	1.6 m

Cut 14 as one piece. Flip over as indicated on dotted line to cut opposite half.



45 in, all sizes

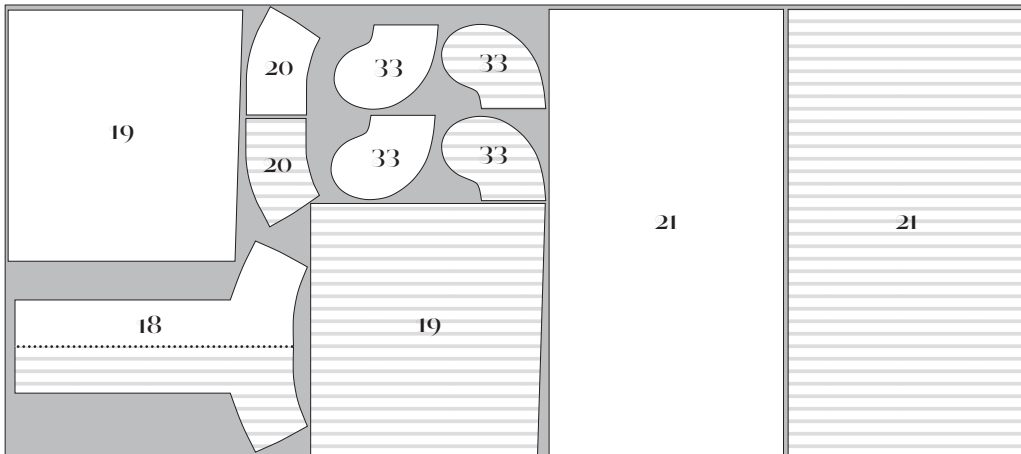


60 in, all sizes

Yoke Skirt with Pockets Lengthwise Layout, Fabric and Lining

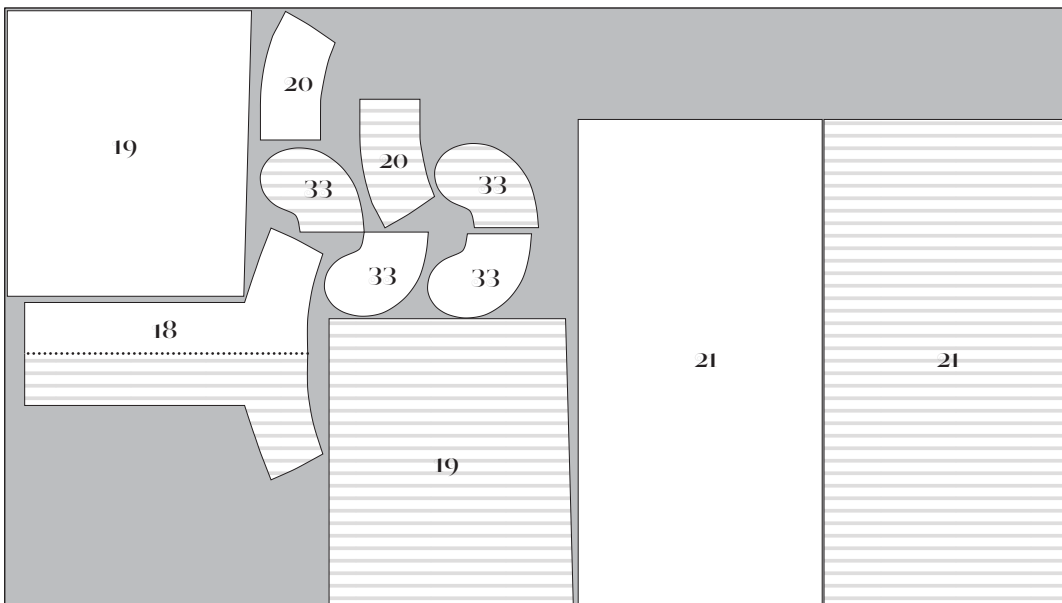
(18, 19, 20, 21, 33)

	Sizes 2-8	Sizes 10-20
45 in	2 ⁷ / ₈ yd 2.6 m	Not possible. Use 60-in-wide fabric or use border-print layout shown below
60 in	2 ⁷ / ₈ yd 2.6 m	4 yd (3.7 m)



Cut 18 as one piece. Flip over as indicated on dotted line to cut opposite half.

45 in, sizes 2-8



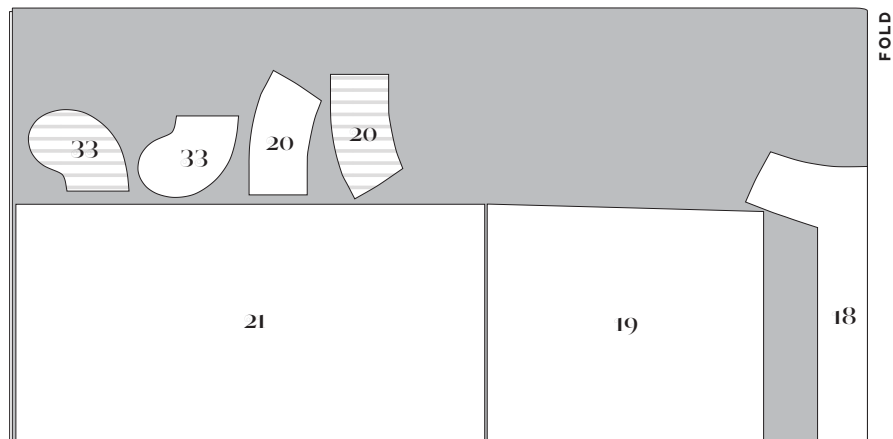
60 in, all sizes

Yoke Skirt, Crosswise Layout

(18, 19, 20, 21, 33)

Use this layout for
scallop-edge and
border-print fabrics.

	Sizes 2-10	Sizes 12-20
45 in	4 ³ / ₄ yd	5 ³ / ₄ yd
60 in	4.3 m	5.3 m

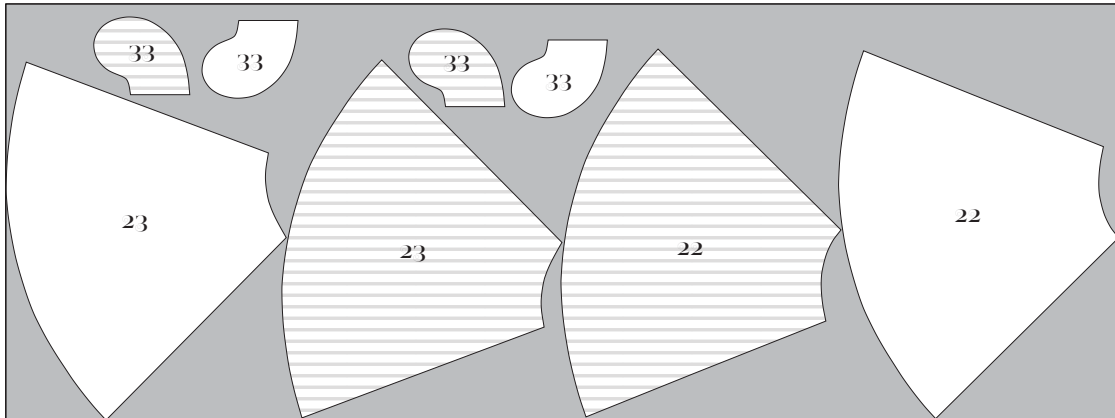


**Flared Skirt
with Pockets,
Fabric and Lining**

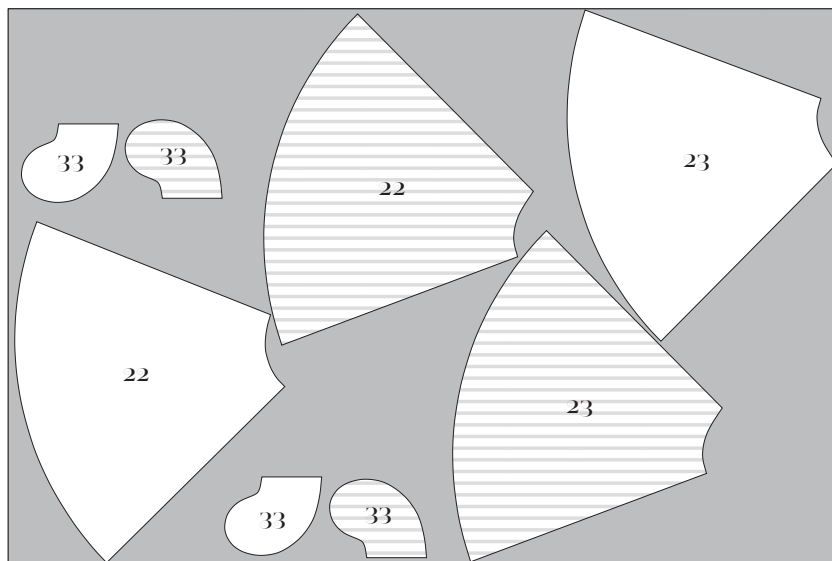
(22, 23, 33)

Sizes 2-10 Sizes 12-20

45 in	3/4 yd 3 m	3/4 yd 3 m
60 in	2 1/2 yd 2.3 m	2 3/4 yd 2.5 m



45 in, all sizes



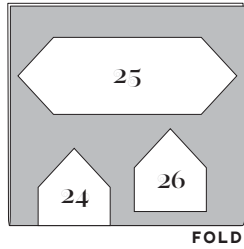
60 in, all sizes

Square Collar, Fabric and Interfacing

(24, 25, 26)

All sizes

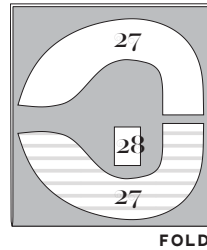
45 in	¾ yd
60 in	0.7 m



Scarf Collar, Fabric (27, 28)

All sizes

45 in	⅝ yd
60 in	0.6 m



Scarf Collar, Interfacing (27, 28)

(27, 28)

All sizes

60 in	⅜ yd
	0.3 m

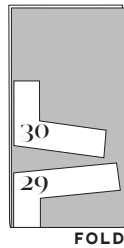


Square Neckline Facing, Fabric and Interfacing

(29, 30)

All sizes

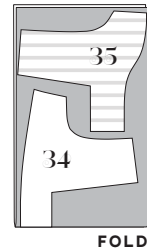
45 in	⅜ yd
60 in	0.3 m



Square Neckline All-In-One Facing, Fabric and Interfacing (34, 35)

Sizes 2-10 Sizes 12-20

45 in	⅜ yd	½ yd
60 in	0.3 m	0.5 m



Round Neckline Facing, Fabric and Interfacing

(31, 32)

All sizes

45 in	¼ yd
60 in	0.2 m

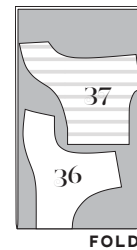


Round Neckline All-In-One Facing, Fabric and Interfacing

(36, 37)

All sizes

45 in	⅜ yd
60 in	0.3 m



A GUIDE TO FITTING YOUR DRESS

Fitting can often be the most challenging part of sewing, but there are some steps you can take to make it as painless as possible! The Night and Day Dress has a very fitted bodice with darts, meant to be sewn in a woven fabric. This type of dress requires careful attention to fitting. It's rare for a pattern to fit perfectly on the first try, so remember that fitting is part of the journey. It's also likely that you won't conform exactly to the size chart, so don't be discouraged if your measurements put you in a couple different sizes.

Start with your body measurements to choose a size. Measure yourself around the fullest part of your bust, the smallest part of your waist, and the fullest part of your hips. Make sure to hold the measuring tape snugly and parallel to the ground. Compare your body measurements to the size chart. (Note: When a dress has a full skirt, there's no need to worry about your hip measurement.)

Pattern cup sizes are different from bra cup sizes. The cup sizes included with this pattern indicate the relationship between your high bust measurement and your full bust measurement. Take your high bust measurement with a tape measure positioned above your breasts and underneath your armpits. Measure your high bust first (make sure the tape is level across your back), then measure your full bust (the fullest part of the breasts). A 1½-inch difference means you are an A cup; a 2-inch difference means you are a B/C cup; a 3-inch difference is a D/DD cup; a 4-inch difference is a F/G cup; and a 5-inch difference is an H cup, etc. If your difference is more or less, you will want to do a Full Bust Adjustment or Small Bust Adjustment (FBA/SBA). If you see your full bust measurement appear in more than one place on the size chart, use the corresponding high bust and the waist measurements to guide you to the right size for your frame.

Next, consult the finished measurements. The finished measurement chart gives more information to help you choose a size you'll feel great in. I designed this dress to be very fitted, with less than 1 inch of ease in the bodice. If you prefer a looser fit, you can go up a size or add

width at the side seams. If you're not sure how much ease you prefer, it can be helpful to measure a similar dress you already own (as long as it's made in a comparable type of fabric). The finished measurements will tell you whether you should size up or down if you're between sizes.

FINISHED MEASUREMENTS: This dress has a very fitted bodice. The bodice was designed to fit with 1/2 to 1 1/2 inch (1.3 to 3.8 cm) of ease in the bust and waist. The Trumpet Skirt is fitted in the hip, with between 1 to 2 inches (2.5 to 5 cm) of ease. For the Flared Skirt and Yoke Skirt, hip measurements are not important when choosing your size, as these skirts are full.

	2	4	6	8	10	12	14	16	18	20
A Cup Full Bust	31 3/4 in 80.6 cm	33 3/4 in 85.7 cm	35 3/4 in 90.8 cm	37 3/4 in 95.9 cm	39 3/4 in 101 cm	41 3/4 in 106 cm	43 3/4 in 111.1 cm	45 3/4 in 116.2 cm	47 3/4 in 121.3 cm	49 3/4 in 126.4 cm
B/C Cup Full Bust	32 1/4 in 81.9 cm	34 1/4 in 87 cm	36 1/4 in 92 cm	38 1/4 in 97.2 cm	40 1/4 in 102.2 cm	42 1/4 in 107.3 cm	44 1/4 in 112.4 cm	46 1/4 in 117.5 cm	48 1/4 in 122.6 cm	50 1/4 in 127.6 cm
D/DD Cup Full Bust	33 1/4 in 84.5 cm	35 1/4 in 89.5 cm	37 1/4 in 94.6 cm	39 1/4 in 99.7 cm	41 1/4 in 104.8 cm	43 1/4 in 109.9 cm	45 1/4 in 114.9 cm	47 1/4 in 120 cm	49 1/4 in 125.1 cm	51 1/4 in 130.2 cm
F/G Cup Full Bust	34 1/4 in 87 cm	36 1/4 in 92 cm	38 1/4 in 97.2 cm	40 1/4 in 102.2 cm	42 1/4 in 107.3 cm	44 1/4 in 112.4 cm	46 1/4 in 117.5 cm	48 1/4 in 122.6 cm	50 1/4 in 127.6 cm	52 1/4 in 132.7 cm
H Cup Full Bust	35 1/4 in 89.5 cm	37 1/4 in 94.6 cm	39 1/4 in 99.7 cm	41 1/4 in 104.8 cm	43 1/4 in 109.9 cm	45 1/4 in 114.9 cm	47 1/4 in 120 cm	49 1/4 in 125.1 cm	51 1/4 in 130.2 cm	53 1/4 in 135.3 cm
Waist	24 1/2 in 62.2 cm	26 1/2 in 67.3 cm	28 1/2 in 72.4 cm	30 1/2 in 77.5 cm	32 1/2 in 82.5 cm	34 1/2 in 87.6 cm	36 1/2 in 92.7 cm	38 1/2 in 97.8 cm	40 1/2 in 102.9 cm	42 1/2 in 108 cm
Hip Trumpet Skirt	37 1/2 in 95.3 cm	39 1/2 in 100.3 cm	41 1/2 in 105.4 cm	43 1/2 in 110.5 cm	45 1/2 in 115.6 cm	47 1/2 in 120.7 cm	49 1/2 in 125.7 cm	51 1/2 in 130.8 cm	53 1/2 in 135.9 cm	55 1/2 in 141 cm
Bicep fitted sleeves	12 3/4 in 32.4 cm	13 in 33 cm	13 1/4 in 33.7 cm	13 1/2 in 34.3 cm	13 3/4 in 34.9 cm	14 in 35.6 cm	14 1/4 in 36.2 cm	14 1/2 in 36.8 cm	14 3/4 in 37.5 cm	15 in 38.1 cm

What to do when you're more than one size. Don't panic. This is common. It's easy to grade between sizes. For instance, if you're a size 14 in the bust and 16 in the waist, all you have to do is gradually angle out from the 14 at the underarm and taper into the 16 at the waistline. (Don't forget to use the size 16 for the skirt.)

I strongly recommend making a test muslin (toile) of your bodice. Cut out the front and back bodice in muslin (unbleached cotton fabric) or another firmly woven, inexpensive fabric. Construct the bodice as usual, using a long machine stitch. Baste in an 18-inch (or longer) zipper. You can use the lapped zipper method on p. 52 or another method of your choice.

Put on and look at your muslin, and check for the following fit issues. If you need further fitting resources, check out my books. There is also a ton of information to be found in online sewing communities.

- Is the bodice too tight or too loose? You should add or remove width at the side seams.
- Is the bust dart position correct? The bust and waist darts should point toward the fullest point of the bust (called the apex) and should end about ½ inch shy of the apex. You may need to raise or lower darts for your bust apex.
- Is the bust too tight or too loose? Try the next cup size up or down. You may need either a FBA or SBA.
- Is the waistline positioned at your natural waistline? You may need to lengthen or shorten the bodice if it's not in the correct position.
- Does the slope of the shoulder match your body? Adjust if needed.
- Do you have excess fabric at the lower back? You may need a swayback adjustment, which removes excess length from the back.
- Is the armhole too tight or too loose? You can make the armhole bigger or smaller accordingly. Note that in a sleeved dress, this may result in needing to adjust the sleeve cap ease. You want the sleeve cap (the round upper edge of the sleeve pattern) to measure between ¾ inch and 1½ inches larger than the bodice's armhole, so start by comparing those measurements to see if you need to add or remove sleeve cap ease.
- Do you have a gaping neckline? You can take out tiny tucks from the pattern to remove excess volume from the neckline.

A note on sleeves: Sleeve fit is personal, and biceps measurements vary wildly from person to person. Don't forget to check the biceps measurement on the finished measurements chart. Plus, keep in mind that you can make a test muslin of the sleeves to add to the bodice muslin.

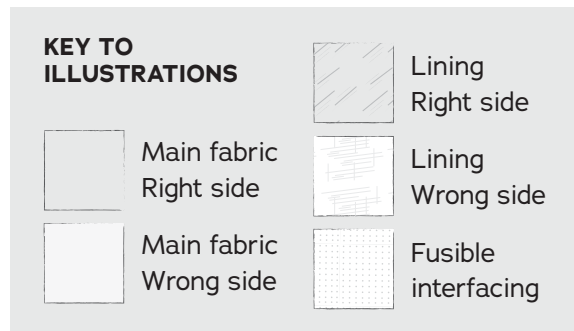
NOTES



SEWING INSTRUCTIONS

BEFORE SEWING

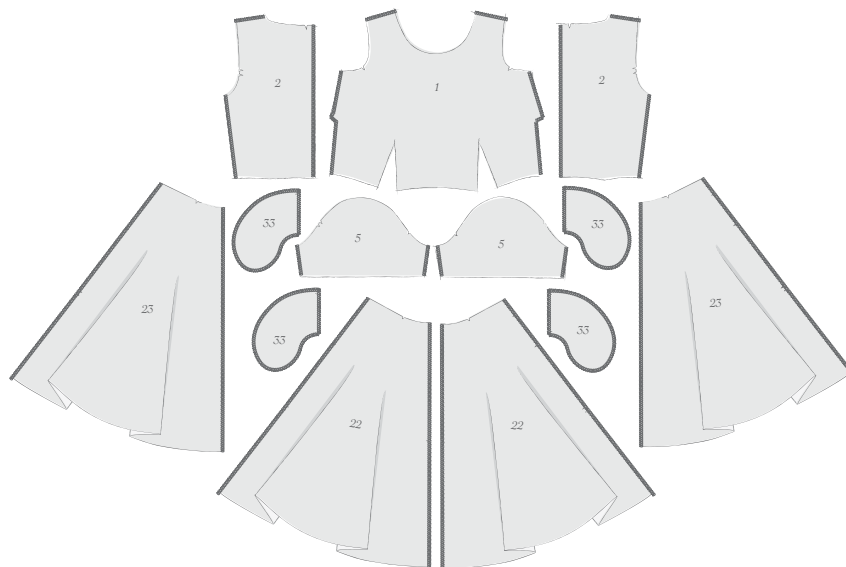
Transfer marks: Use dress-maker's tracing paper and a tracing wheel to copy darts and other pattern marks to the wrong side (WS) of your fabric. Mark the pattern notches by making a snip into the point of the notch with the tip of your scissors.



Interface: Many pattern pieces need to be stabilized with fusible interfacing before sewing. Follow the interfacing cutting instructions on the pattern pieces. Apply fusible interfacing to the WS of the fabric, using a press cloth and steam. Do not move your iron back and forth; lift it up and press down for several seconds at a time until the interfacing is fully adhered.

Finish seams: If finishing seams with a serger, serge the following seam allowances without trimming the edges before starting construction.

- Vertical sides of all bodice, skirt, and sleeve pieces
- All sides of pocket pieces, if using



NOTES:

- If you are lining the bodice, it's unnecessary to finish the bodice seam allowances, as they will be completely enclosed.
- If you find it difficult to see the notches after serging, you may wish to mark notches with chalk, thread tacks, or another marking tool.

BODICES

For all dress designs, start by constructing the bodice of your choice.

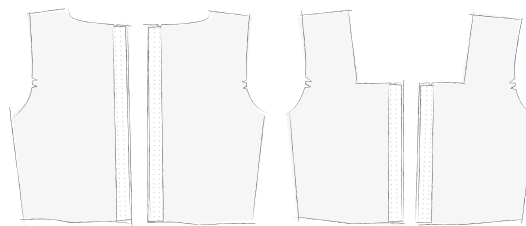
Note: 5/8 inch (in) (1.5 cm) seam allowances are included on all pattern pieces.

BOTH BODICES

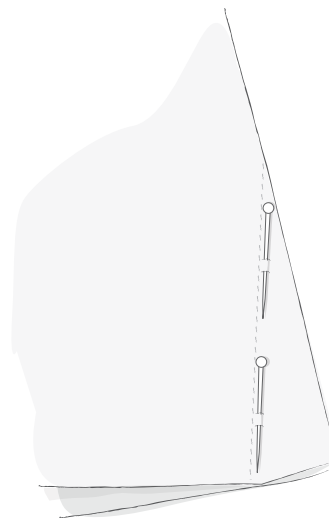
1. Staystitch Bodice Front and Bodice Back neckline (pieces 1 and 2 for the round neckline or 3 and 4 for the square neckline): using a 1/2-in (1.3 cm) seam allowance, stitch directionally from shoulder to center front/back, backstitching at both ends to stabilize neckline. For square neckline, pivot at corners (see Glossary, p. 65).

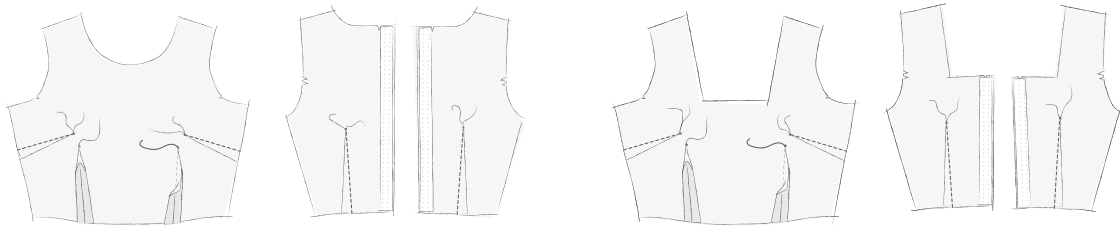


2. Stabilize bodice back center-back seam allowances: apply 1 1/4-in-wide (3 cm) strips of fusible interfacing to back opening's WS from top to bottom.



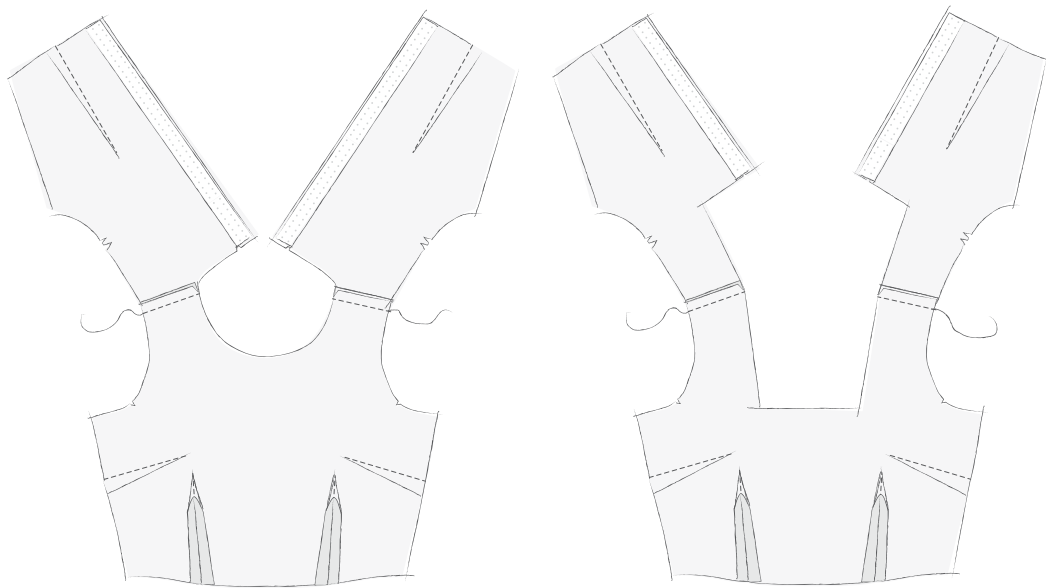
3. Sew bust darts and back waist darts: on bodice front (bust darts only) and bodice back, match dart legs right sides (RS) together, then stitch from dart base to dart point. Backstitch at the beginning but not at the point, leaving a few inches of thread at the points. Tie off the threads and trim. Press bust darts down and back waist darts toward center back.





4. The front waist darts are slightly curved and have a cut-out section. To sew them, match the dart's cut edges and stitch $\frac{5}{8}$ in from the raw edge, starting from the base and following the marked stitching lines near the dart point. Press dart legs open and tip of dart flat.

5. Sew shoulder seams: stitch bodice front to bodice back, RS together, matching notches. Press seam allowances open.

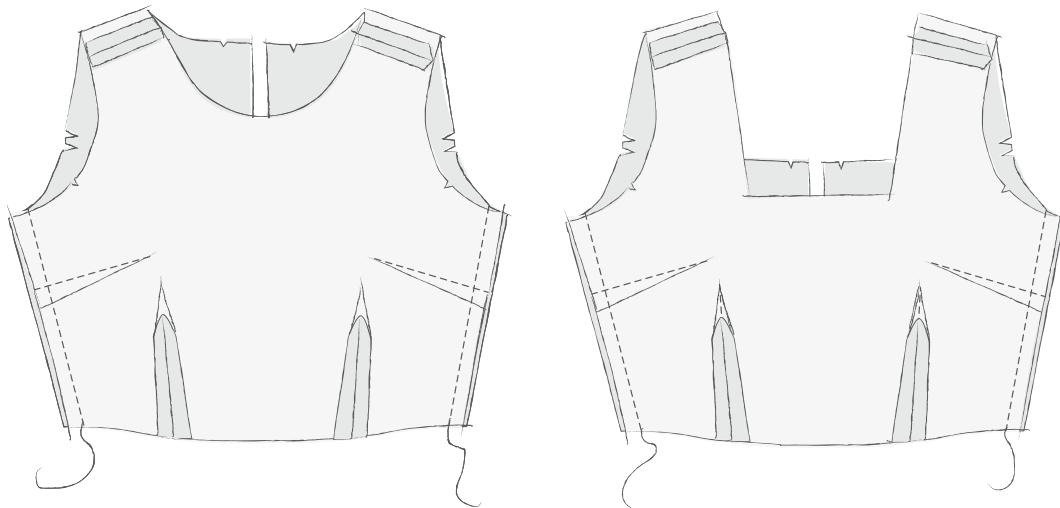


▶ *If making a dress with sleeves, proceed to the next step.*

▶ *If making a sleeveless dress without a collar, go to Sleeveless Bodice Finishing, p. 30, then proceed to step 6 on next page.*

▶ *If making a sleeveless dress with a collar, proceed to Collars, p. 25.*

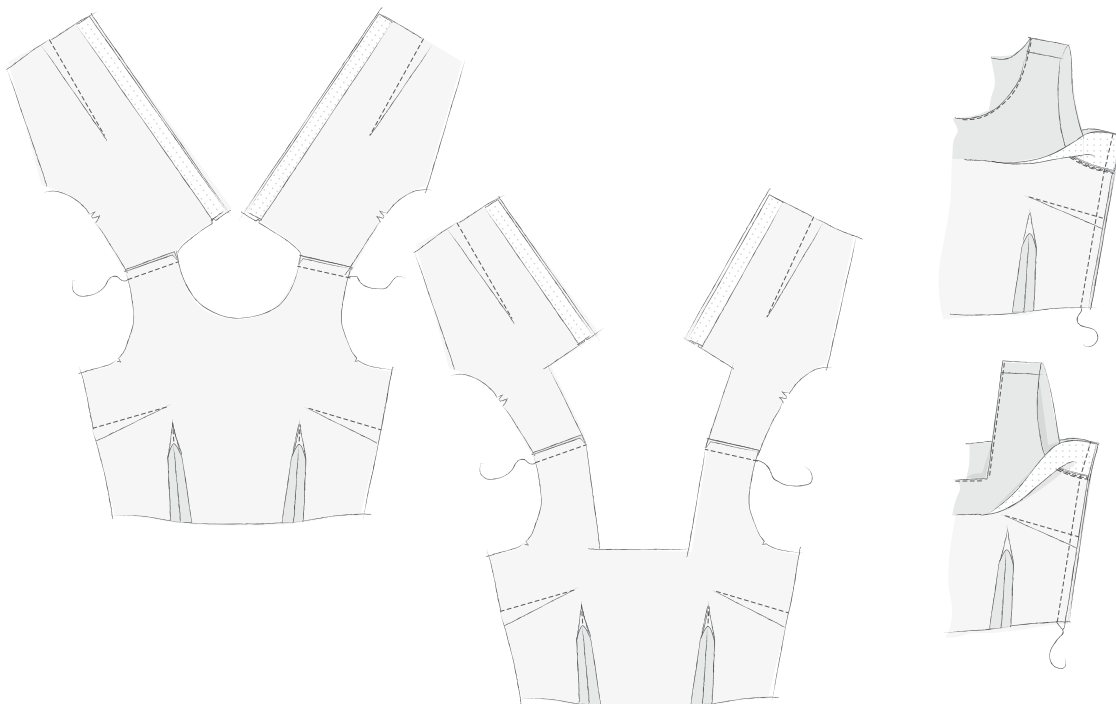
6. Sew side seams: stitch bodice front to bodice back, RS together, matching notches. Press seam allowances open.



▶ *Proceed to Collars, next page.*

▶ *If making a collarless dress, proceed to Preparing Facing/Bodice Lining, p. 29.*

For a sleeveless bodice with an all-in-one facing, flip the facing out from the bodice, pin front and back side seams RS together from waist edge to facing edge, and stitch the seam. Press seam allowances open. Turn facing back to WS.

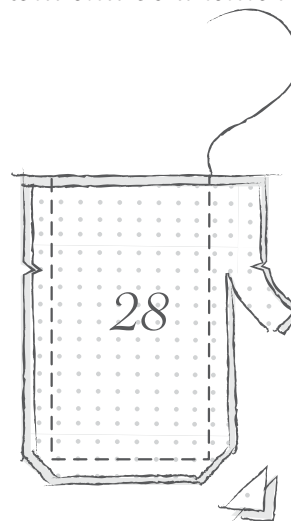


COLLARS

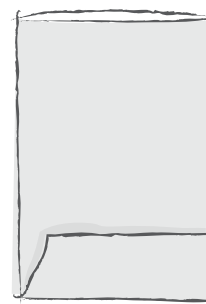
Follow the instructions for the collar of your choice below. Note that if you are making a sleeveless dress with a collar, your side seams will still be unstitched.

SCARF COLLAR

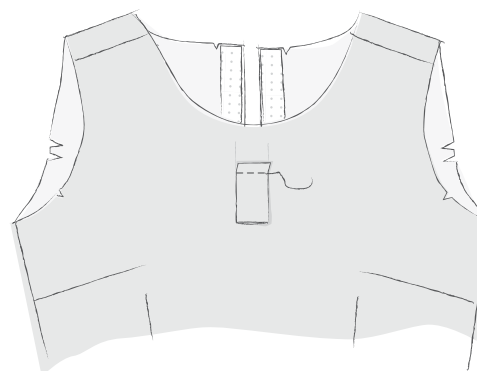
1. Sew collar knot: with RS together, pin interfaced Scarf Collar Knot (28) to uninterfaced piece. Stitch along the two vertical sides and one short end of knot, pivoting at corners. Trim corners closely and trim seam allowances to about $\frac{1}{4}$ in (6 mm).



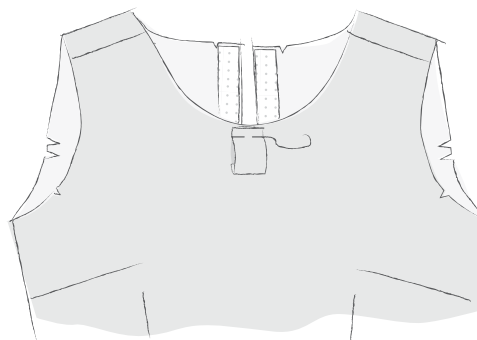
2. Turn knot piece RS out. Make sure corners are crisp by using a knitting needle or pin to gently poke or pull corners out. Press flat, turning seam edges slightly under so that they are hidden on WS of knot. Press short stitched end to WS of knot by $\frac{5}{8}$ in (1.5 cm).



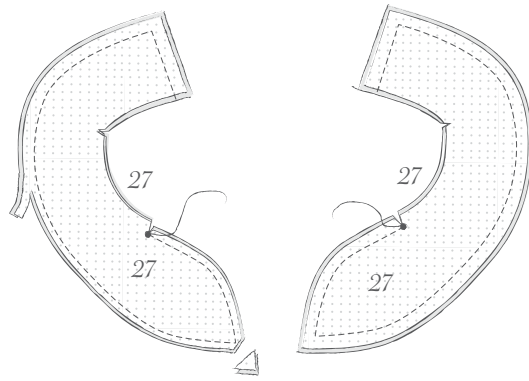
3. Place knot RS down on bodice front neckline at horizontal marking, aligning pressed crease you just made with the marking on bodice. Point the knot's unfinished end toward waistline. Pin and stitch along crease.



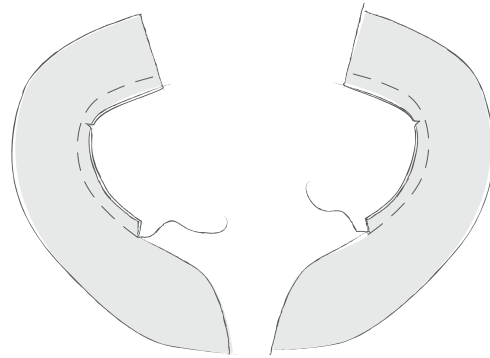
4. Flip up unfinished end of knot so it is flush with raw edge of neckline. Pin and baste in place (see Glossary, p. 65).



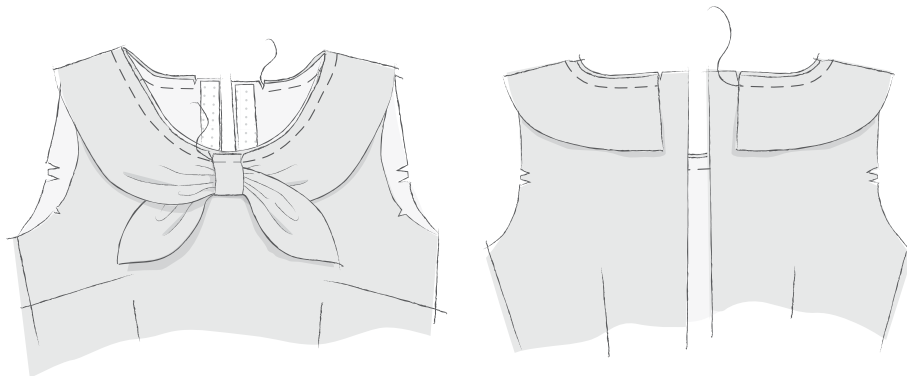
5. With RS together, pin Scarf Collar (27) pieces together in pairs (with one interfaced piece and one uninterfaced piece). Stitch from center back around to circle mark, pivoting at corners. Clip to circle mark. Trim seam allowances close at corners and to about $\frac{1}{4}$ in around rest of stitching.



6. Turn scarf collar pieces RS out, making sure corners are crisp. Press collar pieces flat, turning seam edge slightly under so it is hidden on WS of collar. **Note:** Interfaced piece should become upper layer of collar. Baste raw neckline edges together.



7. Pin and baste scarf collar pieces to bodice neckline, matching symbols and notches (finished back edge of collar ends at back neckline notch). Thread pointed ends through knot. **Note:** Check that the clipped part of the collar (at center front) will not be exposed after facing or lining is applied; clipped section should not extend past $\frac{5}{8}$ in seamline when basted to bodice.

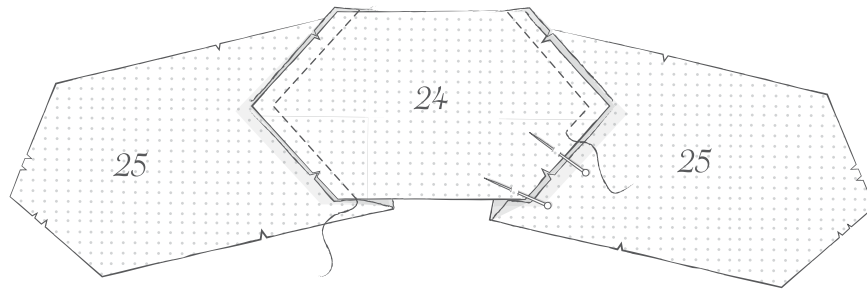


👉 For a dress with sleeves, proceed to *Preparing Facing/Bodice Lining*, p. 29.

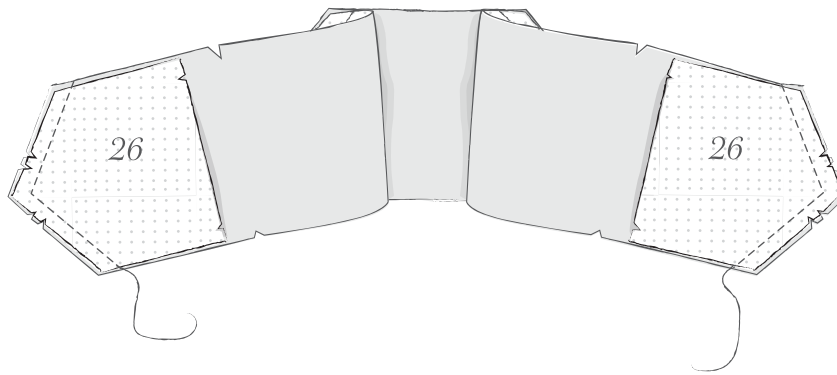
👉 For a sleeveless dress, go to *Sleeveless Bodice Finishing*, p. 30, and then proceed to step 6, p. 24.

SQUARE COLLAR:

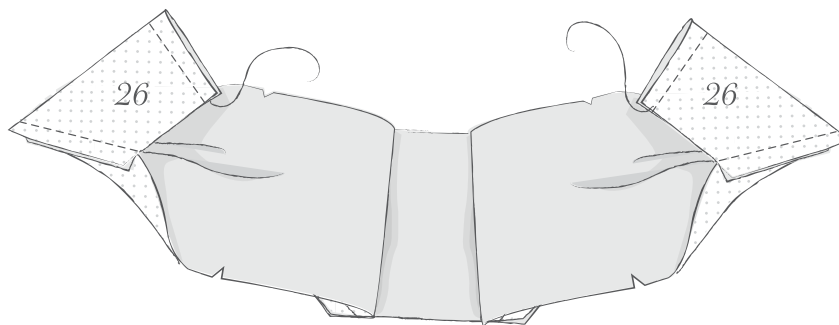
1. Pin interfaced Square Collar Front (24) to interfaced Square Collar Sides (25) as shown, matching notches. Stitch, pivoting at corners.



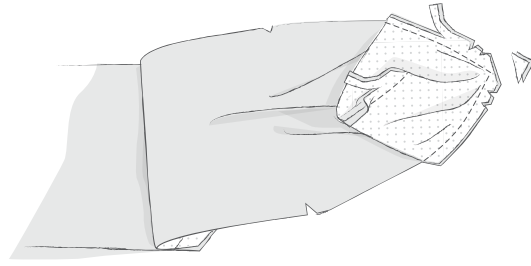
2. Pin square collar sides to interfaced Square Collar Back (26) pieces, matching notches. Stitch.



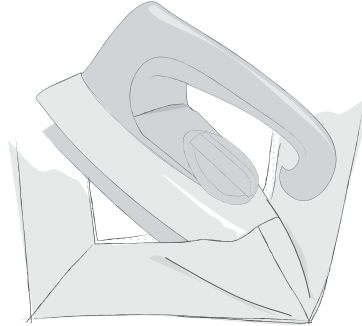
3. Fold collar back lengthwise, RS together, and pin along short ends at center back. Stitch.



4. Trim as close as possible to all corners on stitched square collar, and trim the rest of stitched seam allowances to $\frac{1}{4}$ in (6 mm).

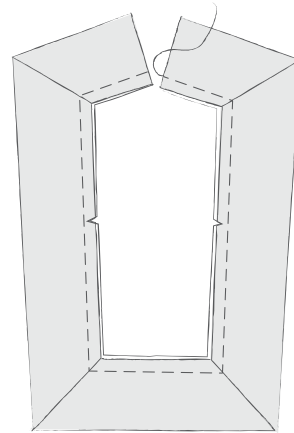


5. Turn collar RS out, turning out corners. Using an iron to reach between layers, press mitered-corner seam allowances open.

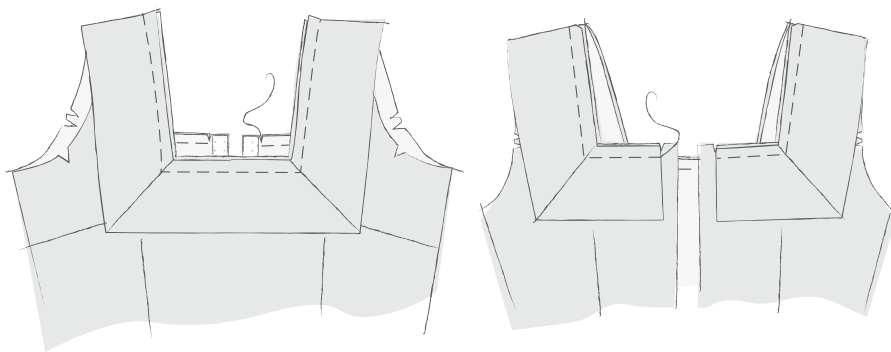


Fold collar along the rest of its sides, WS together and raw edges aligned. Press entire collar flat. Baste collar's raw edges together (see Glossary, p. 65) using a long machine stitch with a $\frac{1}{2}$ in (1.3 cm) seam allowance.

Note: If using trim on collar, stitch trim on now (see p. 59).



6. Baste square collar to square neckline bodice at the neckline, aligning collar to notches at center back.



 *For a dress with sleeves, proceed to Preparing Facing/Bodice Lining, next page.*

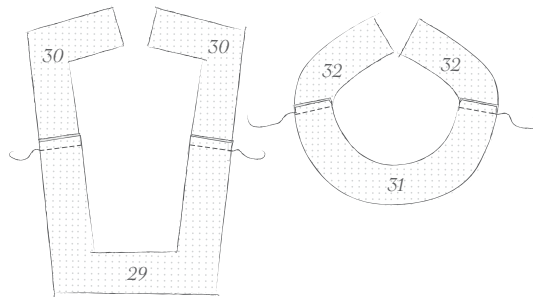
 *For a sleeveless dress, go to Sleeveless Bodice Finishing, p. 30, and then proceed to step 6, p. 24.*

PREPARING FACING/BODICE LINING

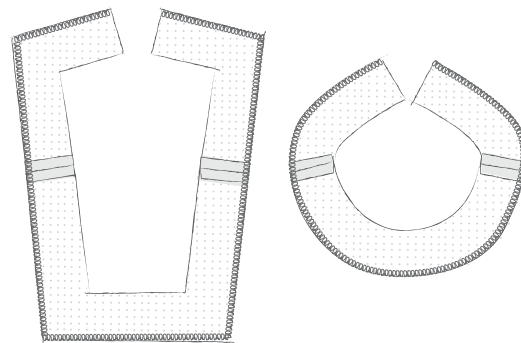
Choose either a neckline facing or full-bodice lining below.

NECKLINE FACING (FOR A DRESS WITH SLEEVES AND NO LINING):

1. Sew interfaced Neckline Facing Front to interfaced Neckline Facing Back (29 and 30 for square neckline, 31 and 32 for round neckline) at shoulder seams, RS together. Press seam allowances open.



2. Finish lower edge of facing unit by serging or other method of your choice.



 *Proceed to Finishing Neckline, p. 31.*

BODICE LINING (FOR A DRESS WITH SLEEVES):

1. Using the same pattern pieces as the outer bodice, sew darts and press.

2. Stitch bodice front lining to bodice back lining at shoulder seams and side seams. Press seam allowances open.

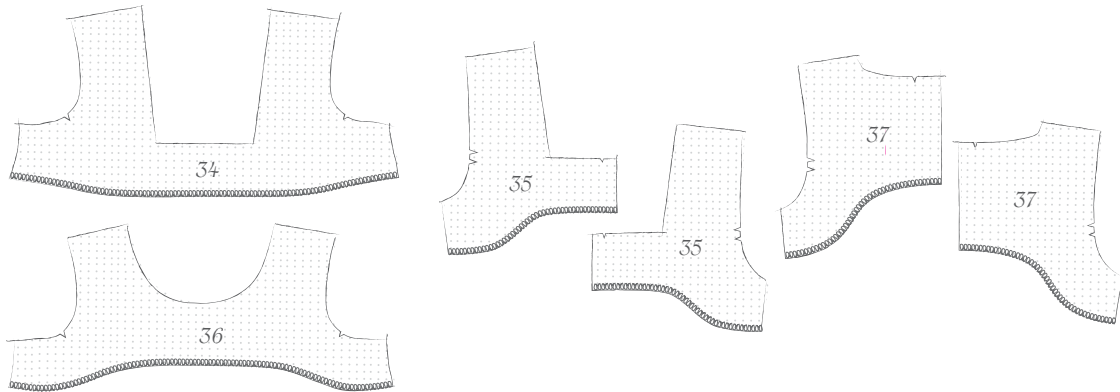
 *Proceed to Finishing Neckline, p. 31.*

SLEEVELESS BODICE FINISHING

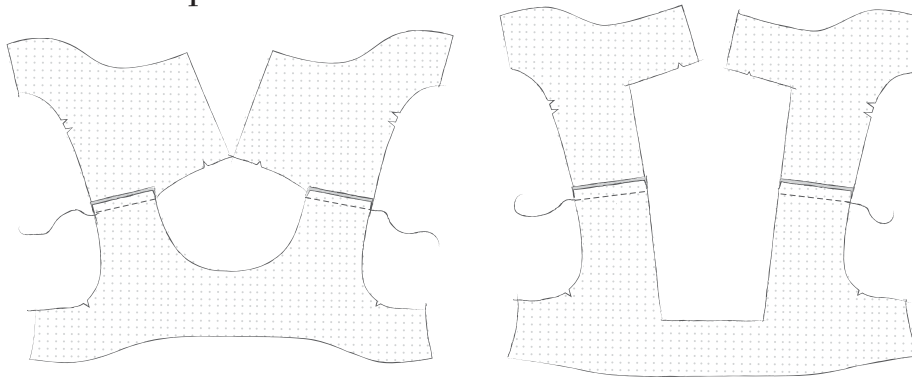
Choose from either an all-in-one facing or bodice lining below.

ALL-IN-ONE FACING:

1. Finish lower edge of interfaced Facing Front and interfaced Facing Back (34 and 35 for square neckline, 36 and 37 for round neckline) by serging or another method of your choice.



2. Sew facing front to facing back at shoulder seams, RS together. Press seam allowances open.



 *Proceed to Finishing Neckline, next page.*

BODICE LINING:

1. Using the same pattern pieces as the outer bodice, sew darts and press.

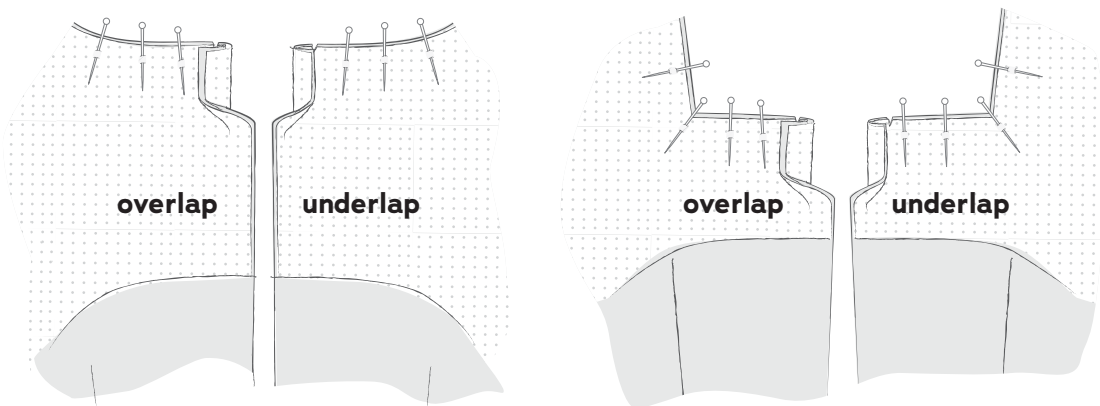
2. Stitch bodice front lining to bodice back lining at shoulder seams and side seams. Press seam allowances open.

 *Proceed to Finishing Neckline, next page.*

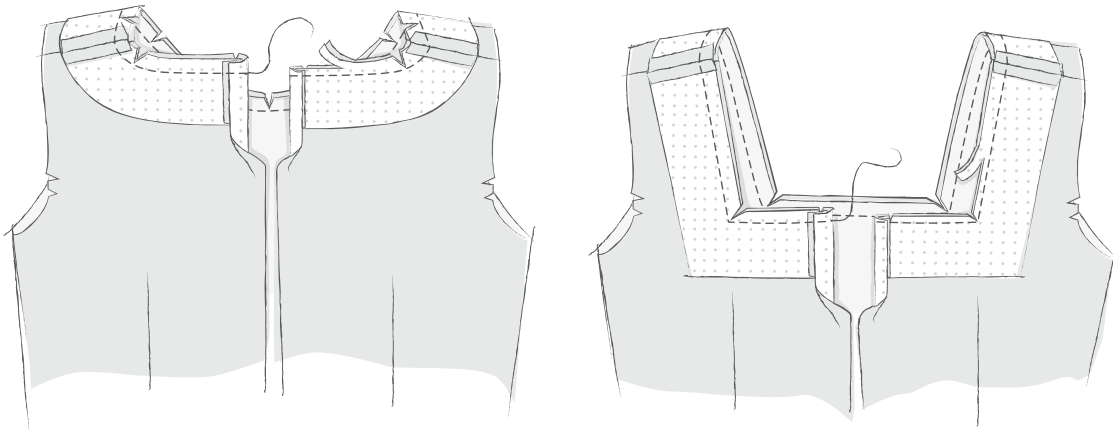
FINISHING NECKLINE

The following instructions apply to both a neck facing and a lining, for sleeveless dresses and dresses with sleeves. This is my clean-finish method that creates a tidy finish on the inside of the dress's neckline. The following instructions are illustrated with a neckline facing, but the methods are the same for a lining or an all-in-one-facing.

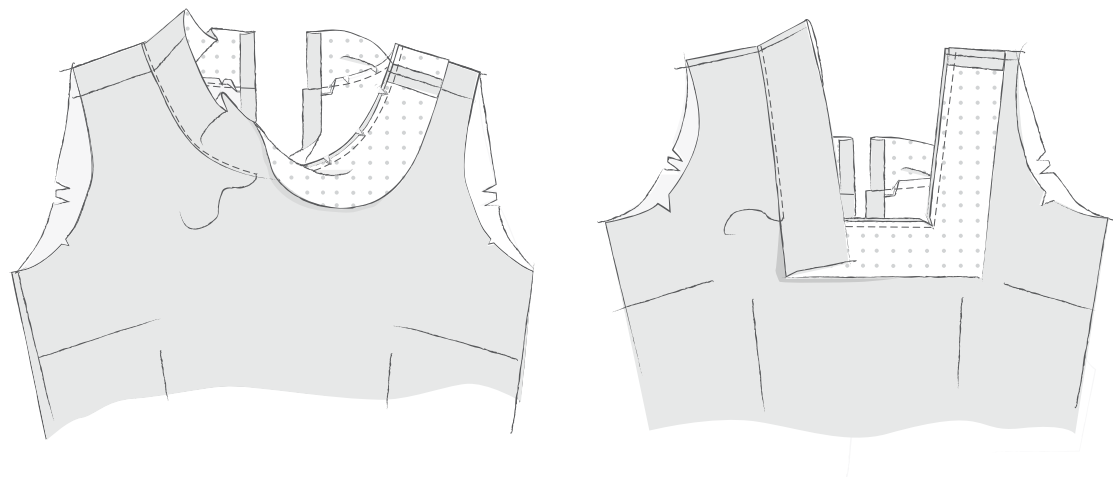
1. Prepare to attach facing/lining: pin facing/lining to outer bodice along neckline, RS together. At zipper opening's top edge, fold seam allowances as follows, working with bodice back facing up and RS out: on the right half of opening (the underlap), fold both seam allowances to facing/lining WS $\frac{1}{2}$ in (1.3 cm). The facing/lining seam allowance is nested inside the outer fabric seam allowance. On opening's left half (the overlap), fold facing/lining seam allowance to WS $\frac{7}{8}$ in (2.2 cm). Fold outer fabric seam allowance to WS $\frac{5}{8}$ in (1.5 cm). Seam allowances nest together, with facing/lining seam allowance $\frac{1}{4}$ in (6 mm) wider. Folding seam allowances this way ensures facing/lining is finished neatly around lapped zipper at neckline.



2. Sew facing/lining to outer bodice: stitch around neckline, starting at one folded edge (pivoting at corners for square neckline only) and ending at the other folded edge. Grade seam allowances (see Glossary, p. 65) so that those on outer bodice are the widest and those on the facing/lining are narrower. (If there is a collar, trim its seam allowances to a width between bodice and facing/lining.) For square neckline, clip into corners. For round neckline, clip into curves every 1/2 in.



3. Understitch neckline: from RS, with facing/lining opened out from bodice and seam allowances underneath, stitch the facing/lining 1/8 in (3 mm) from seamline, catching seam allowances in stitching. Turn facing/lining to bodice WS and press neckline edge, rolling seamline inside. (See Glossary, p. 66.)

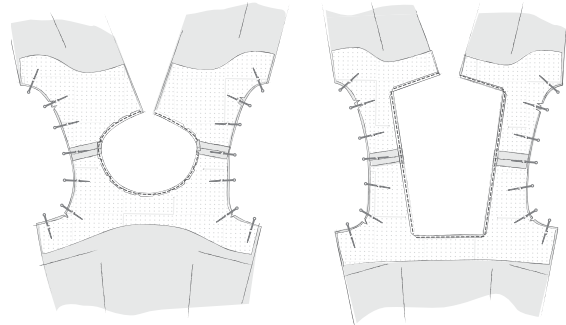


▶ *For sleeveless dresses with linings or all-in-one facings, proceed to [Finishing Armholes](#), next page. For dresses with sleeves, proceed to [Sleeves](#), p. 34.*

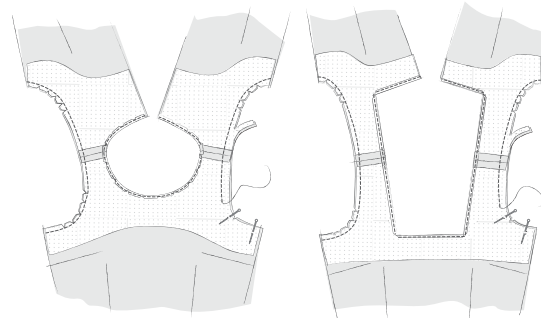
FINISHING ARMHOLES (SLEEVELESS DRESS WITH LINING OR ALL-IN-ONE FACING)

Note: Instructions are illustrated with an all-in-one facing, but the method is the same for a sleeveless dress lining.

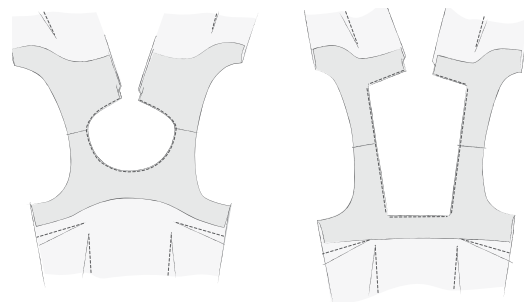
1. Turn lining/facing to RS of bodice. (Side seams are still unstitched on bodice and lining/facing.) Pin lining/all-in-one facing armhole to bodice armhole, RS together, matching notches and shoulder seams. If dress has a collar, roll collar up slightly toward neckline to avoid catching it in pins and stitching.



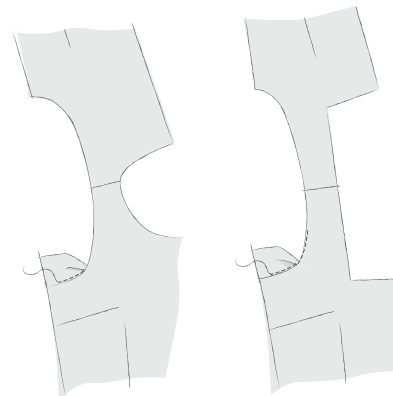
2. Stitch around armhole. Grade seam allowances so that bodice's are the widest and facing's are narrower (see Glossary, p. 65). Clip into armhole curves.




3. Turn bodice RS out, reaching through each front shoulder and pulling bodice backs through.



4. Understitch each armhole the same as for neckline: sew front and back of armhole separately, breaking stitching and restarting on other side of armhole when shoulder gets too narrow to continue. (See Glossary, p. 66.) Press armhole edges, rolling seamline to WS.



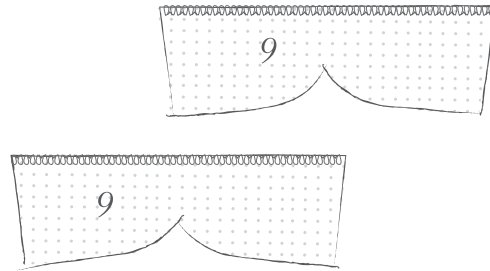
 Complete step 6 of Bodice instructions, p. 24, then proceed to Skirts, p. 43.

SLEEVES

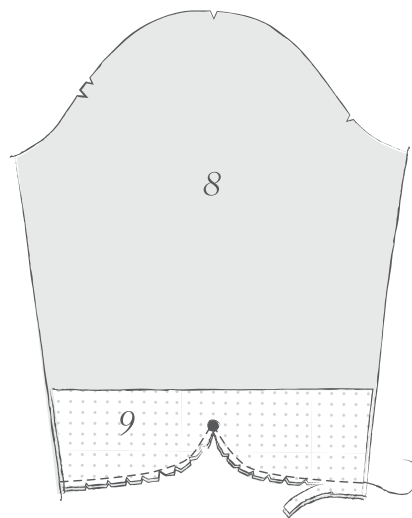
Follow instructions for the sleeve of your choice below. All sleeves are unlined.

THREE-QUARTER SLEEVE WITH SHAPED HEM

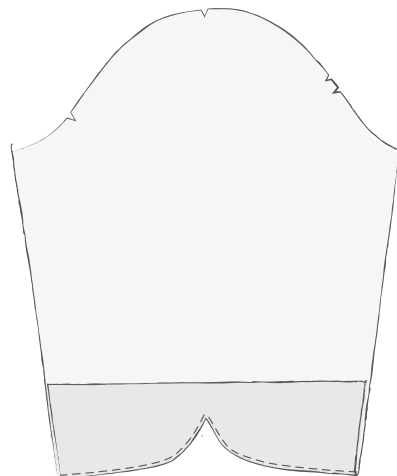
1. Finish upper edge of interfaced Three-quarter Sleeve Facing (9).



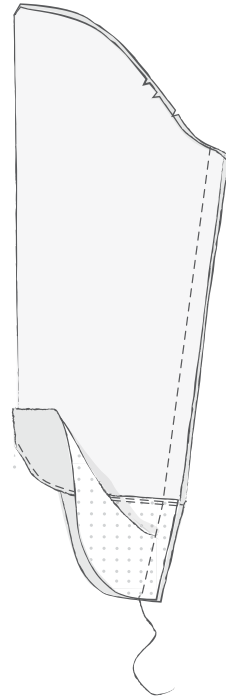
2. With RS together, pin and stitch three-quarter sleeve facing to lower edge of Three-quarter Sleeve (8), following marked stitching line. Grade seam allowances, trimming facing seam allowance to about $\frac{1}{8}$ in (3 mm) and sleeve seam allowance to about $\frac{1}{4}$ in (6 mm). Clip into seam allowances at circle, being careful not to cut into stitches. Notch outer curves.



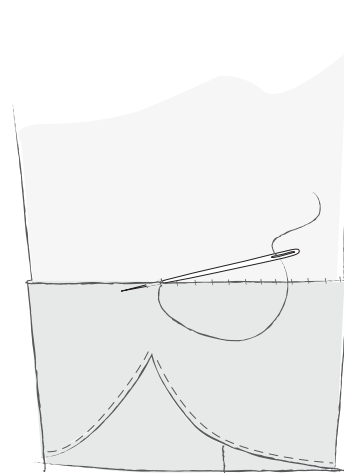
3. Understitch facing: from RS, with facing opened out from sleeve and seam allowances underneath, stitch $\frac{1}{8}$ in from seamline, catching seam allowances in stitching and pivoting at marked circle. Turn facing to WS of sleeve and press, rolling seamline to inside.




4. Stitch underarm seam: open out facing from sleeve again and, with RS together, pin along sleeve seam from underarm to upper edge of facing. Stitch and press seam allowances open.



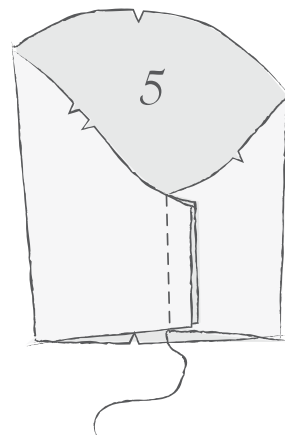
5. Turn facing to WS of sleeve and secure by slipstitching invisibly to sleeve. (See Glossary, p. 66.)



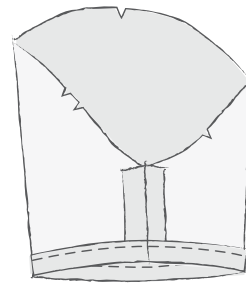
 Proceed to *All Dresses with Sleeves*, p. 42, to set sleeve into bodice.


SHORT SLEEVE:

1. Stitch underarm seam on Short Sleeve (5), RS together. Press seam allowances open.



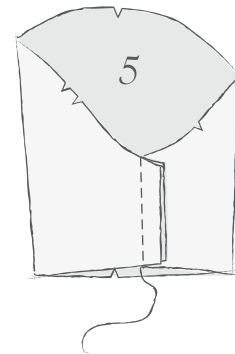
2. Hem sleeve: finish lower edge of sleeve and press under $\frac{5}{8}$ in (1.5 cm). Hem by hand-stitching invisibly from WS of sleeve or by machine-topstitching on RS of sleeve $\frac{1}{2}$ in (1.3 cm) from pressed edge.



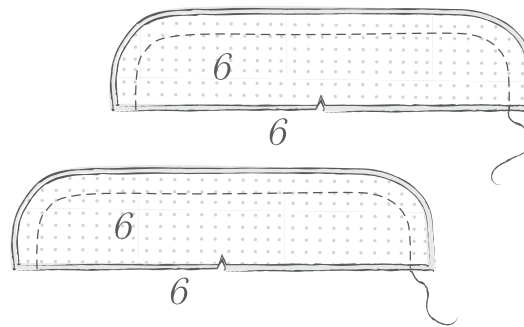
 Proceed to *All Dresses with Sleeves*, p. 42, to set sleeve into bodice.

SHORT SLEEVE WITH CUFF:

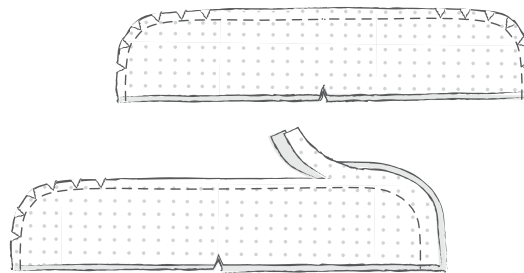
1. Stitch underarm seam on Short Sleeve (5), RS together. Press seam allowances open.



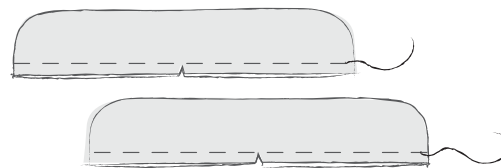
2. With RS together, pin one interfaced Short Sleeve Cuff (6) to each uninterfaced cuff. Stitch around curved edge, leaving straight edge open.



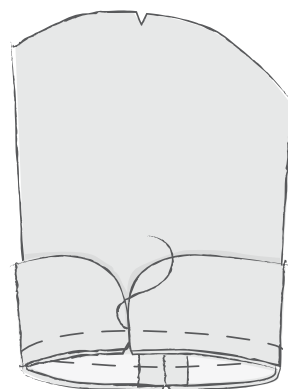
3. Grade seam allowances so that interfaced seam allowance is slightly wider than uninterfaced seam allowance. Notch curved parts of seam allowance.



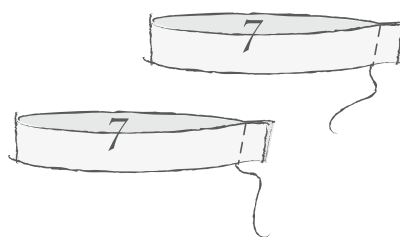
4. Turn cuff RS out and press flat, rolling seamline toward uninterfaced piece (interfaced side of cuff will be on the outside). Baste raw edges together.



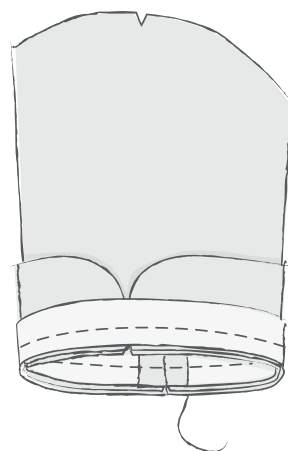
5. Pin a cuff RS out to each sleeve's RS, so that ends meet at sleeve's notch point. Baste cuff to sleeve.



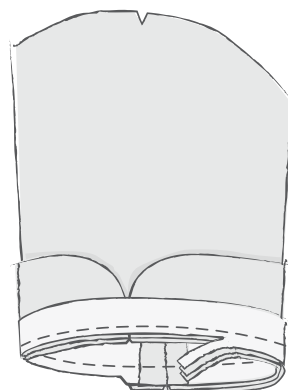
6. Finish upper edge of Short Sleeve Facing (7). Pin short ends of facing, RS together, to form a ring. Stitch. Press seam allowances open.



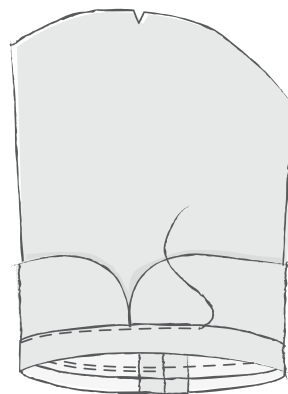
7. Pin facing to sleeve over cuff, RS together, matching notches and seams. Stitch.



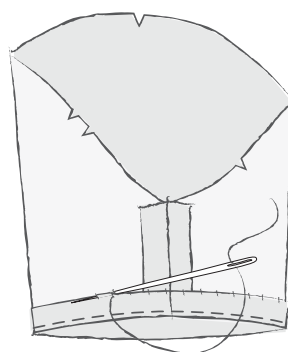
8. Grade seam allowances so that sleeve's is widest, cuff's is slightly narrower, and facing's is narrowest.



9. With facing opened out from sleeve and seam allowances underneath, understitch facing from RS. Stitch $\frac{1}{8}$ in (3 mm) from seamline, catching seam allowances in stitching.



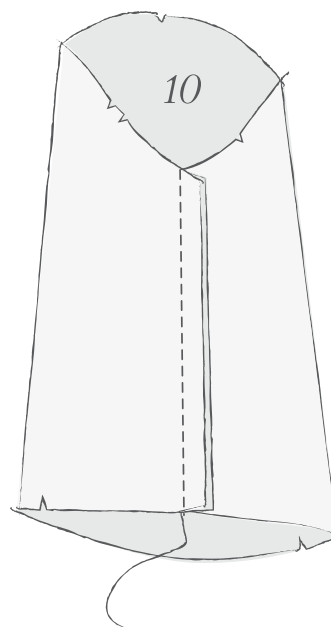
10. Turn facing to WS of sleeve and press edge, rolling seamline to inside of sleeve. Secure facing by slipstitching it to WS of sleeve. (See Glossary, p. 66.)



 Proceed to *All Dresses with Sleeves*, p. 42, to set sleeve into bodice.

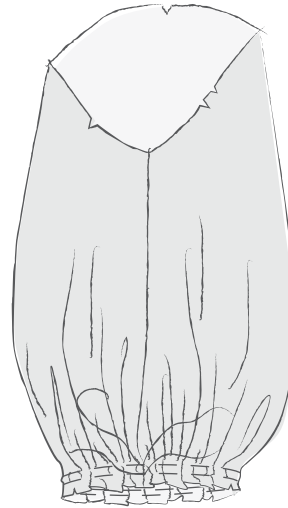
ELBOW-LENGTH BISHOP SLEEVE WITH BAND:

1. Stitch underarm seam of Elbow-Length Bishop Sleeve (10), RS together. Press seam allowances open.

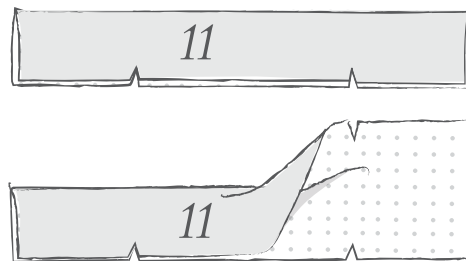


2. Gather lower edge of sleeve:

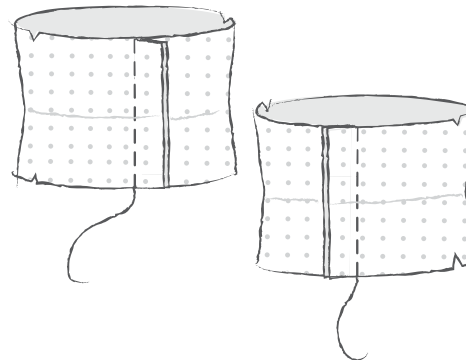
sew two lines of gathering stitches within seam allowance. Place first line of gathering stitches $\frac{1}{2}$ in (1.3 cm) from raw edge and second line of gathering stitches $\frac{1}{4}$ in (6 mm) from raw edge. Pull up bobbin threads to gather.



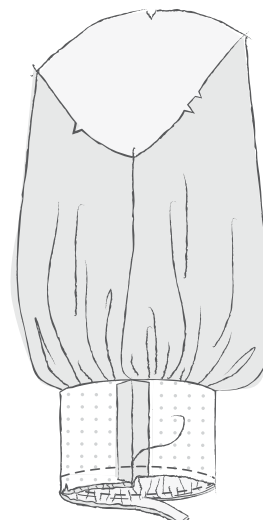
3. Sew sleeve band: press Elbow-Length Bishop Sleeve Band (11) in half lengthwise to crease.




4. Open up band and pin short ends RS together, forming a ring. Stitch. Press seam allowances open.

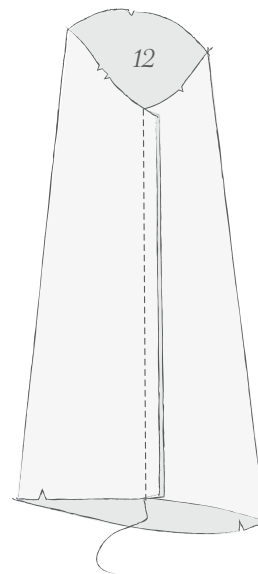
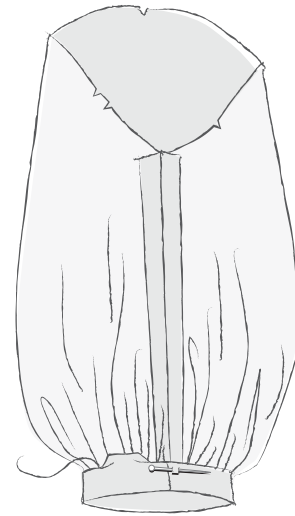


5. Pin one edge of band to gathered lower edge of sleeve, RS together, matching notches and evenly distributing gathers. Stitch. Grade seam allowances so that sleeve's is narrower than band's.



6. Press seam allowances toward band. Fold band along pressed crease, then turn under its seam allowance, enclosing graded seam allowances of sleeve and band. Press, pin, and slipstitch invisibly in place by hand. (See Glossary, p. 66.)

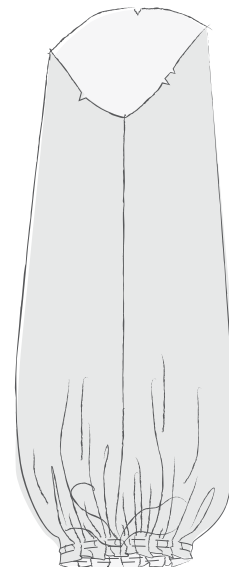
 Proceed to *All Dresses with Sleeves*, p. 42, to set sleeve into bodice.



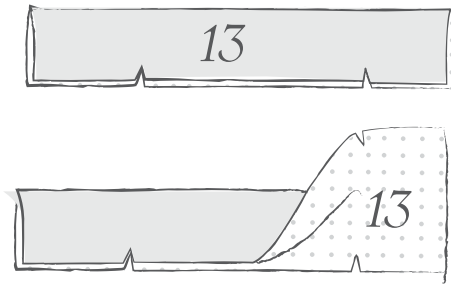
LONG BISHOP SLEEVE WITH BINDING:

1. Stitch underarm seam of Long Bishop Sleeve (12), RS together. Press seam allowances open.

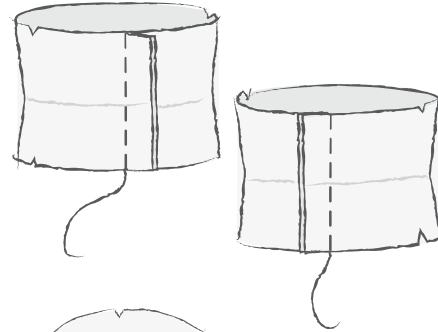
2. Gather lower edge of sleeve: sew two lines of gathering stitches, within seam allowance. Place first line of gathering stitches $\frac{1}{2}$ in (1.3 cm) from raw edge and second line of gathering stitches $\frac{1}{4}$ in (6 mm) from raw edge. Pull up bobbin threads to gather.



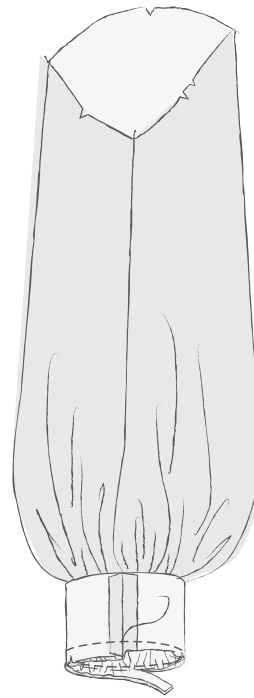
3. Sew sleeve binding: press Long Bishop Sleeve Binding (13) in half lengthwise to crease.



Open up the binding and pin short ends RS together, forming a ring. Stitch. Press seam allowances open.



4. Pin one edge of binding to gathered lower edge of sleeve, RS together, matching notches and evenly distributing gathers. Stitch. Grade seam allowances so that sleeve's is narrower than binding's.



5. Press seam allowances toward binding. Fold binding along pressed crease, then turn under seam allowance, enclosing graded seam allowances of sleeve and binding. Press, pin, and slipstitch invisibly in place by hand. (See Glossary, p. 66.)



 *Proceed to All Dresses with Sleeves, p. 42, to set sleeve into bodice.*

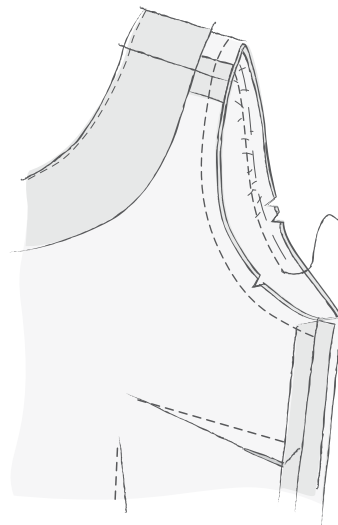
ALL DRESSES WITH SLEEVES:

1. If the bodice has a lining, baste lining and outer bodice together at armholes, WS together.

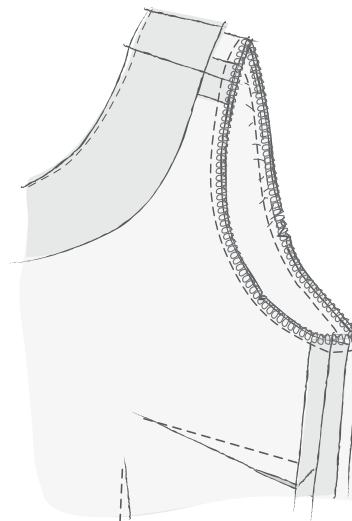
2. Set sleeves into bodice: using a long gathering stitch (4 mm to 5 mm), stitch each sleeve cap between notches, using a 1/2-in-wide (1.3-cm) seam allowance. Repeat with 1/4-in-wide (6-mm) seam allowance. Pull up bobbin threads to slightly gather sleeve cap. Distribute gathers evenly to avoid any visible gathers or tucks on seamline.



Pin each sleeve to armhole, RS together, matching notches. Stitch.



3. For all dresses, trim armhole seam allowances as one to about 3/8 in (1 cm), then finish seams as desired. If serging, trim and finish simultaneously. Press seam allowances toward sleeve.



 *Proceed to Skirts section, next page.*

SKIRTS

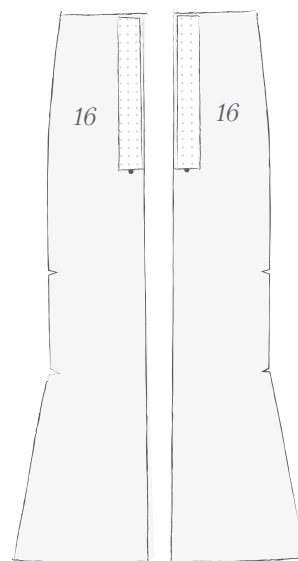
Follow instructions for the skirt of your choice below.

TRUMPET SKIRT:

1. Sew Trumpet Skirt Front (14) to Trumpet Skirt Side Fronts (15), RS together, matching notches and stitching directionally from bottom to top. Press seam allowances open.

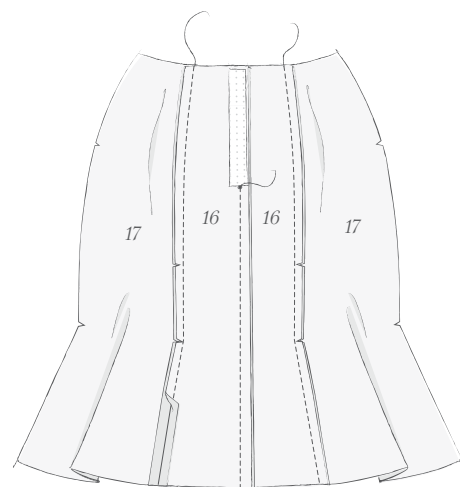


2. Stabilize Trumpet Skirt Back (16) zipper opening: apply 1¼-in-wide (3 cm) strips of fusible interfacing to center back opening's WS above zipper circles.



3. Sew center back seam: pin Trumpet Skirt Backs (16), RS together, and stitch center back seam from hem allowance edge up to zipper circle. Press seam allowances open.

4. Sew Trumpet Skirt Side Backs (17) to trumpet skirt back, RS together, matching notches and stitching directionally from bottom to top. Press seam allowances open.



5. Sew skirt front to skirt back at the side seams, RS together, matching notches and stitching directionally from bottom to top. Press open.

6. Optional lining: repeat above steps in lining fabric.

▶ *For a skirt with a lining, proceed to **Joining Bodice to Skirt, Fully Lined Dress, p. 50.***

▶ *For a dress with only a bodice lining, proceed to **Joining Bodice to Skirt, Bodice Lining Only, p. 51.***

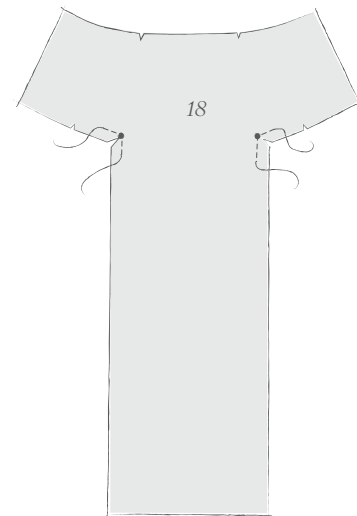
▶ *For an unlined dress, proceed to **Joining Bodice to Skirt, Unlined Dress, p. 51.***



YOKE SKIRT:

1. Reinforce inner corner on Yoke Skirt

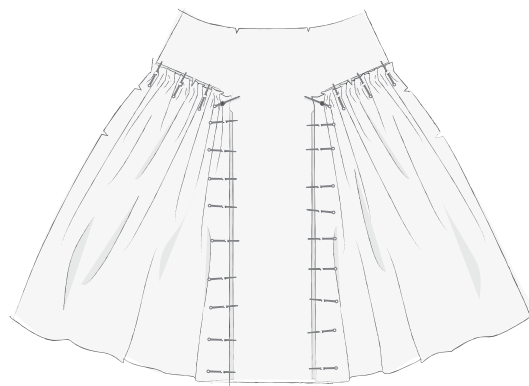
Center Front (18): stitch along marked reinforcement stitching line, pivoting at circle. Clip diagonally into seam allowance, stopping just short of stitching.



2. Create gathering on Yoke Skirt Lower Fronts (19) and Lower Backs (21): sew two lines of gathering stitches by machine, within seam allowances. Place first line of gathering stitches $\frac{1}{2}$ in (1.3 cm) from raw edge, and second line of gathering stitches $\frac{1}{4}$ in (6 mm) from raw edge. Pull up bobbin threads to gather. Pull up bobbin threads to gather.



3. Stitch skirt center front and lower front together: this inner corner can be challenging to sew. Make sure circles are clearly marked on all pieces. Match circles on skirt center front and skirt lower front, RS together, and place a pin at the match point, just at circle. Pin the two sides of seam (on either side of circle) together, spreading the clip on skirt lower front and adjusting gathers as needed.



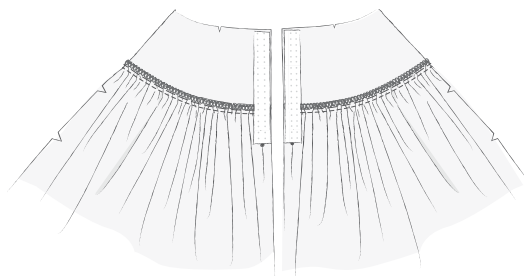
Stitch, pivoting at circle. When pivoting, be sure to move all fabric out of the way of needle before lowering presser foot again. Continue stitching other side of seam. Finish seam allowances as one. Press vertical seams toward center front and press diagonal seams toward yoke.



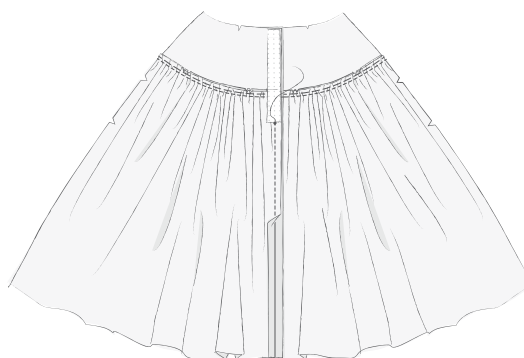
4. Sew skirt back: pin Back Yoke (20) to Lower Back (21), RS together, adjusting gathers to fit. Stitch. Finish seam allowances as one and press seams toward yoke.



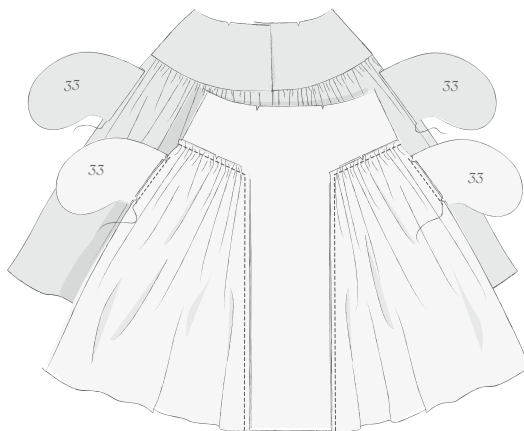
5. Stabilize skirt back zipper opening: apply 1¼-in-wide (3 cm) strips of fusible interfacing to WS of center back opening above the zipper circle.



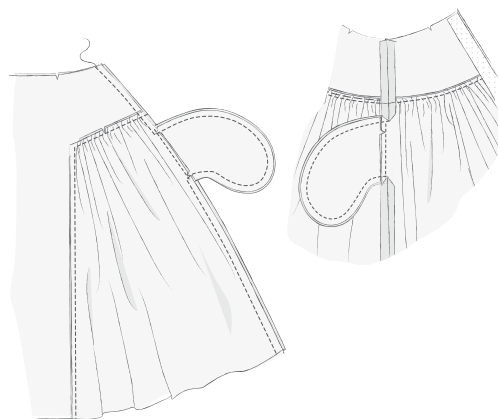
6. Sew center back seam: pin Skirt Backs, RS together, and stitch center back seam from hem allowance edge up to zipper notch. Press seam allowances open.



7. Attach pockets: stitch Pockets (33) to skirt front and back at side seams, matching notches and using a 3/8-in (1 cm) seam allowance. Press pockets toward seam allowances.



8. Assemble skirt: pin front to back at side seams, RS together, and stitch. Pivot at top and bottom of pockets and stitch around pocket edges. Clip into pocket pivot points on back seam allowances, and press pockets toward skirt front. Press seam allowances open above and below pockets.



9. Optional lining: repeat above steps in lining fabric, omitting pockets.

▶ *For a skirt with a lining, proceed to [Joining Bodice to Skirt, Fully Lined Dress](#), p. 50.*

▶ *For a dress with only a bodice lining, proceed to [Joining Bodice to Skirt, Bodice Lining Only](#), p. 51.*

▶ *For an unlined dress, proceed to [Joining Bodice to Skirt, Unlined Dress](#), p. 51.*

FLARED SKIRT:

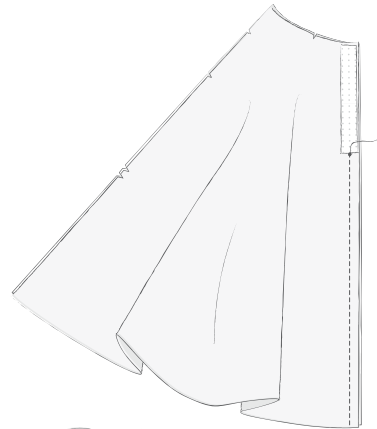
1. Sew Flared Skirt Fronts (22) RS together at center front, matching notches and stitching directionally from bottom to top. Press seam allowances open.



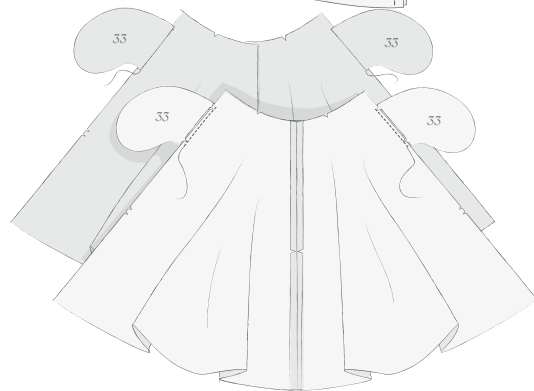
2. Stabilize Flared Skirt Back (23)
zipper opening: apply 1¼-in-wide (3 cm) strips of fusible interfacing to WS of center back opening above zipper circle.



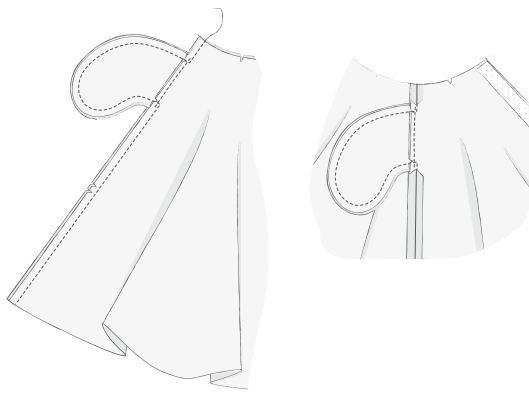
3. Pin flared skirt backs RS together at center back, and stitch seam from hem allowance edge up to zipper circle. Press seam allowances open.



4. Attach pockets: stitch Pockets (33) to skirt front and skirt back side seams, matching notches and using ⅜-in (1 cm) seam allowance. Press pockets toward seam allowances.



5. Assemble skirt: pin skirt front to skirt back at side seams, RS together, and stitch. Pivot at top and bottom of pockets and stitch around pocket edges. Clip into pocket pivot points on back seam allowances, and press pockets toward front. Press seam allowances open above and below pockets.



6. Optional lining: repeat above steps in lining fabric, omitting pockets.

▶ *For a skirt with a lining, proceed to [Joining Bodice to Skirt, Fully Lined Dress](#), p. 50.*

▶ *For a dress with only a bodice lining, proceed to [Joining Bodice to Skirt, Bodice Lining Only](#), p. 51.*

▶ *For an unlined dress, proceed to [Joining Bodice to Skirt, Unlined Dress](#), p. 51.*

JOINING BODICE TO SKIRT

Follow the set of instructions below that corresponds to the finishing method you've chosen.

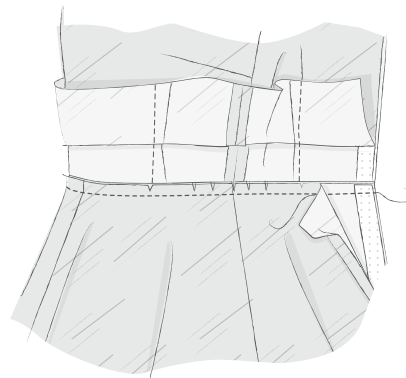
FULLY LINED DRESS

1. Baste skirt to skirt lining: stitch them at waistline, WS together, leaving 2 in (5 cm) unbasted on both sides of zipper opening.



2. Attach skirt to bodice: pin skirt to bodice, RS together, leaving bodice lining free at waistline and matching side seams and notches.

(Note: For Trumpet Skirt, make sure to match bodice darts to skirt seams.) With skirt lining's unbasted section folded out of the way, begin stitching, securing outer skirt to outer bodice. Stop at skirt basting and backstitch; trim the threads. Smooth skirt lining flat under presser foot, and continue stitching through all layers. Where skirt basting ends, backstitch and trim the threads. Fold skirt lining's unbasted section out of the way, and finish stitching skirt to bodice. Grade seam allowances so bodice's is the widest. Clip into waistline seam allowance about every 1/2 in (1.3 cm) at the curviest part of waist (on each side of side seams). Press seam allowances toward bodice.



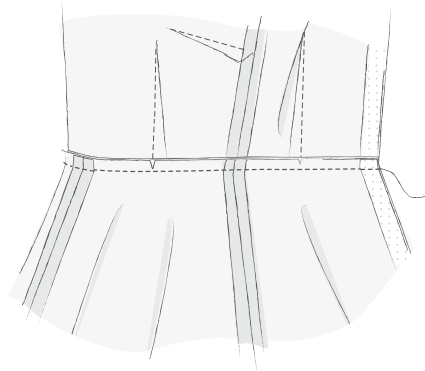
 *Proceed to Inserting Zipper, p. 52.*

UNLINED DRESS

1. Pin bodice to skirt, RS together, matching seams. (**Note:** For Trumpet Skirt, make sure to match bodice darts to skirt seams.) Stitch.

2. **Finish seam allowances:** trim waistline seam allowances as one to about $\frac{3}{8}$ in, then finish as desired; if serging, trim and finish simultaneously. Press waistline seam allowances toward bodice.

▶ *Proceed to Inserting Zipper, next page.*

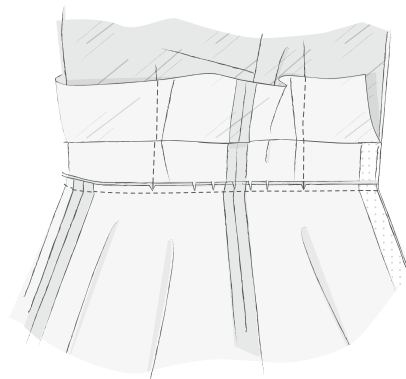
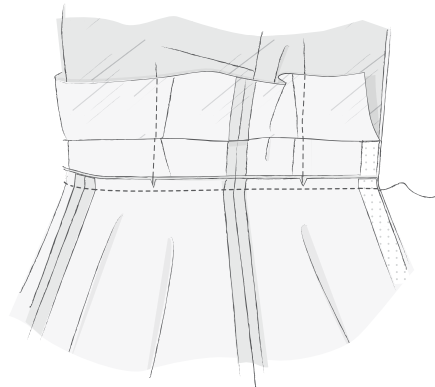


BODICE LINING ONLY

1. Pin bodice to skirt, RS together, matching seams and keeping bodice lining free. (**Note:** For Trumpet Skirt, make sure to match bodice darts to skirt seams.) Stitch.

2. Grade seam allowances so bodice's is the widest. Clip into waistline seam allowance about every $\frac{1}{2}$ in (1.3 cm) at the curviest part of waist (at side seams). Press seam allowances toward bodice.

▶ *Proceed to Inserting Zipper, next page.*



INSERTING ZIPPER

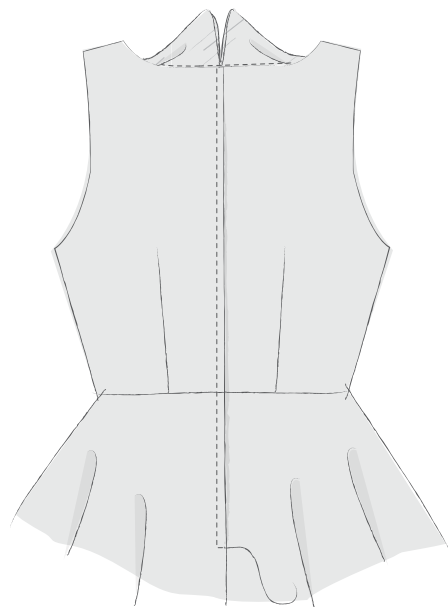
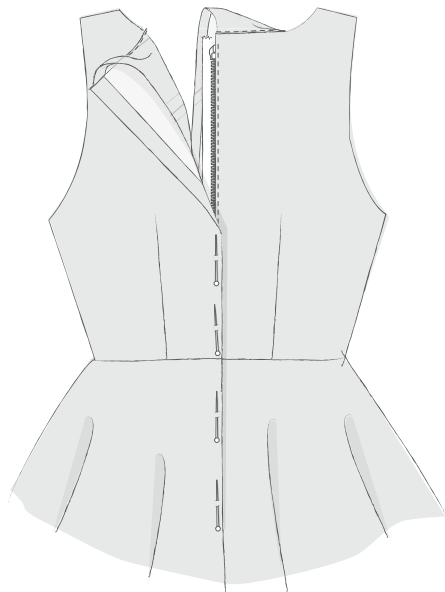
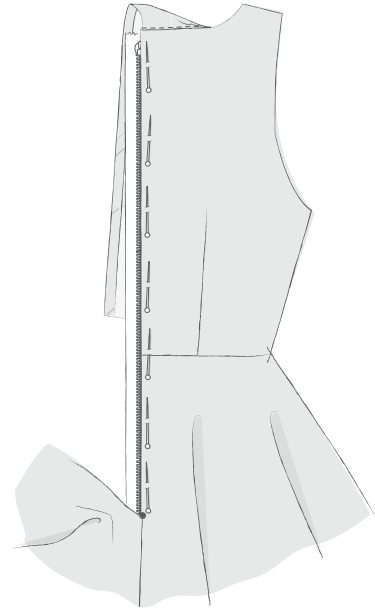
1. Insert zipper, leaving lining free (if applicable):

with dress RS out, on the right half of opening (the underlap), press stabilized zipper opening seam allowance to WS $\frac{1}{2}$ in (1.3 cm). Pin zipper under pressed seam allowance, placing zipper teeth just left of fabric fold. Open zipper halfway. Using a zipper foot, stitch from top to bottom next to zipper teeth, just on fold. As needle approaches zipper pull, stop stitching and close zipper; continue stitching.

2. On left half of zipper opening (the overlap), press the seam allowance under $\frac{5}{8}$ in (1.5 cm). With zipper closed, position the overlap over zipper teeth so fabric fold just covers stitching on the underlap; make sure waistline seam matches on either half of zipper. Pin the overlap to zipper tape. Open zipper and topstitch the overlap $\frac{3}{8}$ in (1 cm) from fold, closing zipper when you reach zipper pull; finish stitching to base of zipper.

3. Pivot work and stitch across base of zipper opening.

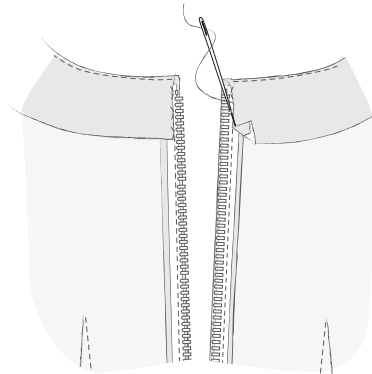
 *Proceed to Hand-Stitching Inside the Dress, next page.*



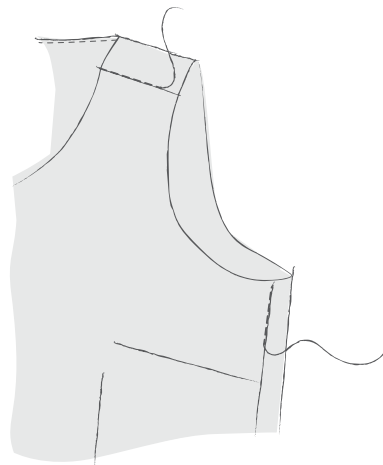
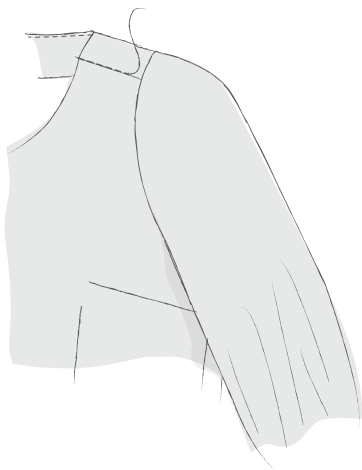
HAND-STITCHING INSIDE THE DRESS

FOR A DRESS WITH A FACING ONLY:

1. Turn under seam allowances of facing at zipper opening. Pin them to zipper tape and then slipstitch in place by hand (see Glossary, p. 66).



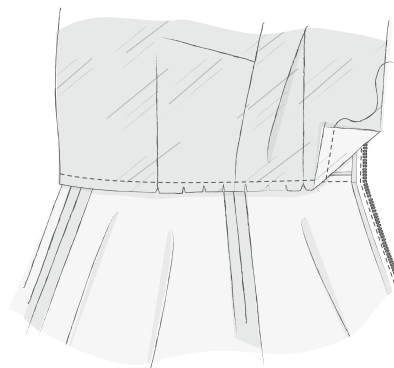
2. Secure facing at shoulder seams: pin facing from outside bodice so that facing and bodice shoulder seams align. With dress RS out, machine-stitch in the ditch of shoulder seamlines. For a dress with an all-in-one facing, also secure facing at side seams by stitching in the ditch.



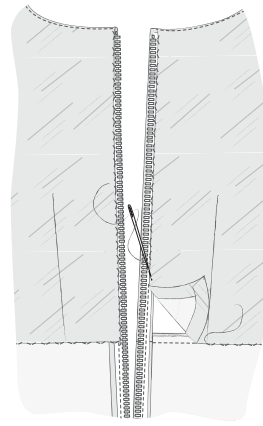
 *Proceed to Hemming the Dress, p. 55.*

FOR A DRESS WITH A BODICE LINING ONLY:

1. Staystitch along waistline of bodice lining (see Glossary, p. 66). Clip into waistline seam allowance about every $\frac{1}{2}$ in (1.3 cm) at the curviest part of waist (at side seams).



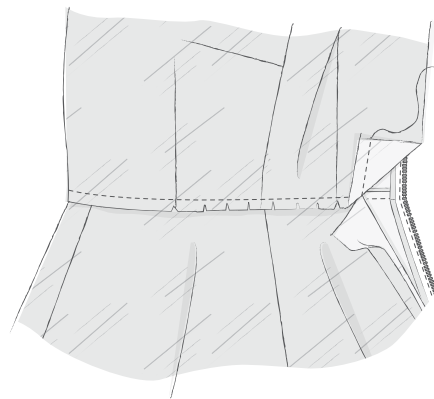
2. Turn under bodice lining at waistline, rolling the staystitching just to WS. Turn under bodice lining seam allowances at zipper opening and pin in place. Slipstitch lining to zipper tape by hand (see Glossary, p. 66). Pin and slipstitch bodice lining to waistline seam.



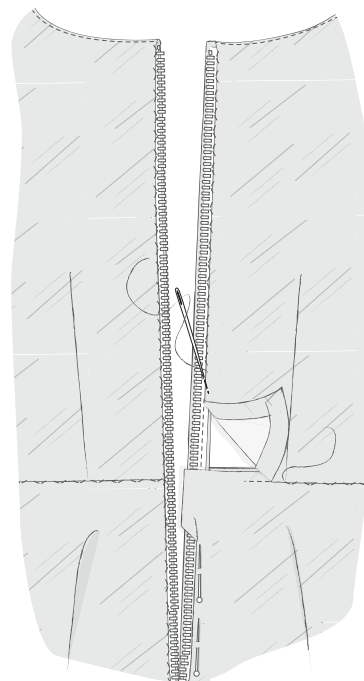
 *Proceed to Hemming the Dress, next page.*

FOR A DRESS WITH A FULL LINING:

1. Staystitch along waistline of bodice lining (see Glossary, p. 66). Clip into waistline seam allowance about every $\frac{1}{2}$ in (1.3 cm) at the curviest part of waist (at side seams).



2. Turn under bodice lining at waistline, rolling the staystitching just to WS. Turn under bodice and skirt lining seam allowances at zipper opening and pin in place. Slipstitch lining to zipper tape by hand. Pin and slipstitch bodice lining to waistline seam, catching skirt lining's free 2 in (5 cm) near zipper in the stitches.



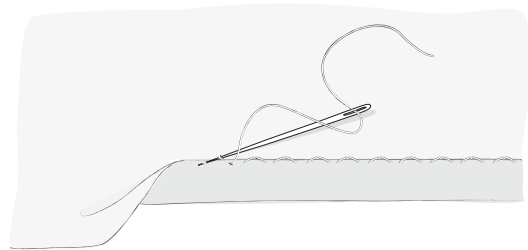
 *Proceed to Hemming the Dress, next page.*

HEMMING THE DRESS

Note: For Flared Skirt, allow dress to hang for 24 hours before hemming. This will allow the bias to stretch before you even up the hem in the next step.

1. Try on the dress (wearing the shoes you plan to wear with it). Even the hem by measuring from floor and marking desired hemline plus $\frac{5}{8}$ in (1.5 cm) hem allowance all the way around on the skirt. Repeat on skirt lining (if applicable), marking it $\frac{1}{2}$ in (1.3 cm) shorter than skirt. Trim along lower marked lines.

2. Serge raw edge, or finish it with hem tape or hem lace. Press hem up $\frac{5}{8}$ in to WS of dress. Hand-stitch hem, using a slipstitch and catching just a thread of outer fabric so stitches don't show.



3. For a skirt lining, press hem under $\frac{5}{8}$ in. Turn raw edge in to meet pressed fold. Edgestitch hem by machine just next to upper fold.



TAKE YOUR
DRESS TO THE
NEXT LEVEL

This pattern can serve as a blank slate for many interesting fabrics and trims. Here are a few ideas to get you started.

For photographs of these elements, visit www.bygertie.com. Also consult *Gertie's Ultimate Dress Book* (Abrams, 2016) for advanced dressmaking techniques that you can use with this pattern.

USING CONTRAST FABRICS

An easy way to create visual appeal on this dress is to cut smaller elements in a contrasting fabric. Try sewing either of the collars and the Short Sleeve Cuffs in a different fabric from your primary dress fabric for a beautiful effect.

SEWING WITH STRIPES AND PLAIDS

I love stripes and plaids so much that I specifically designed elements of this dress to work with them. These fabrics require careful planning and cutting, so here are a few tips:

- First, study your striped or plaid fabric carefully. See how often the pattern repeats, and make sure it's a good match for the placement you're envisioning. (For instance, the Square Collar is only 3 in [7.62 cm] wide when finished, so very big stripes may not work). Lay the pattern pieces over your fabric if you want to test the stripe placement.
- It's best to cut pieces one at a time on a single fabric layer, rather than on the fold.
- Before sewing, pin your fabric together, using the pins to make sure that the stripe or plaid matches on both layers. You may wish to use a walking foot to ensure that fabric layers don't shift as you sew.
- When cutting out pieces, consider what will be placed at center front and center back. For example, you'll want the stripes to be symmetrical on both sides of a bodice, so position a dominant stripe exactly at center front or center back.

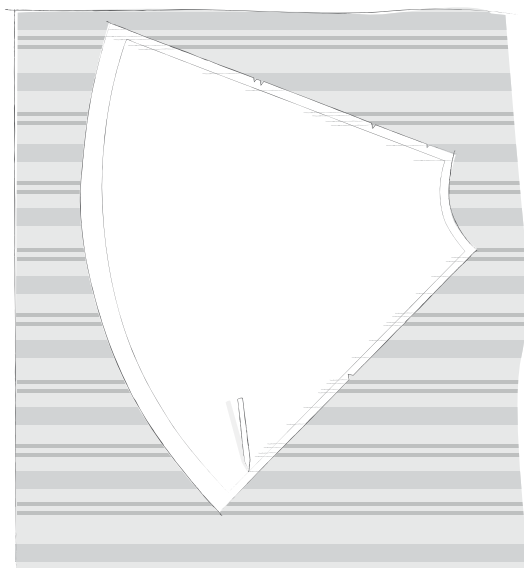
- You can cut pieces on the bias to call attention to specific areas and create visual interest. For example, the Scarf Collar would look amazing in bias-cut plaid.

The Square Collar: The mitered corners of this collar look stunning with perfectly matched stripes. Use the foldline marked on the collar pattern pieces as your guide, and position a line of the stripe or plaid at the same point in relation to the foldline on each pattern piece. Sew as usual, making sure your stripes stay aligned.

The Flared Skirt: When cut on the bias, stripes or plaids form a lovely chevron design at the seams of this skirt. Start by aligning the bias grainline on the skirt front pattern piece to a line of the fabric's stripe or plaid. Be conscious of where the point of the first chevron will be positioned in relation to your waistline—it's flattering to have a dominant stripe just below the waistline.



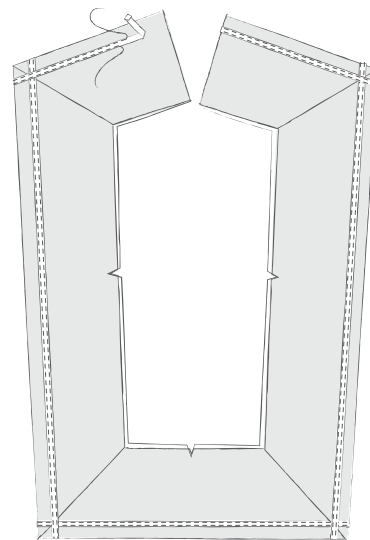
Place the pattern on a single layer of fabric, and mark where stripes are positioned on the pattern at the center front and at the side seams. Cut the first skirt front piece. Turn the pattern piece to its WS and position it on the fabric so that the stripes and markings on the pattern align with the fabric's stripe or plaid; you may need to first transfer those marks to the pattern's WS using a serrated tracing wheel. Cut.



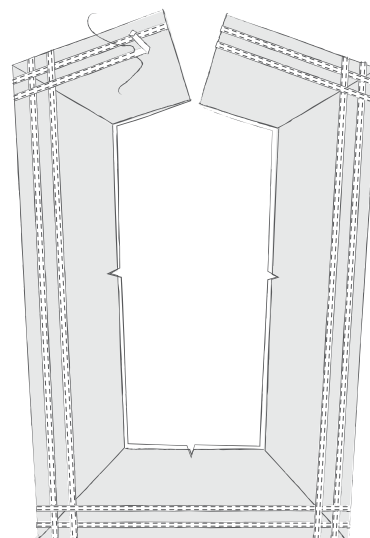
For the skirt back, transfer the side seam stripe placement from the skirt front pattern piece to the skirt back pattern piece, using a serrated tracing wheel. Lay the pattern piece on the fabric, aligning the marks on the pattern with the stripe on the fabric. See where the stripe aligns at center back and mark the placement on your pattern piece. Don't worry if it doesn't align with the bias-grain marking; it's more important to align the stripes than to line up the fabric exactly on the true 45-degree bias. Cut the first piece, turn the pattern piece over to its WS (transfer any stripe markings to the WS of the pattern piece if necessary), and cut the second skirt back piece. Sew as usual, making sure your stripes stay aligned.

SAILOR TRIM

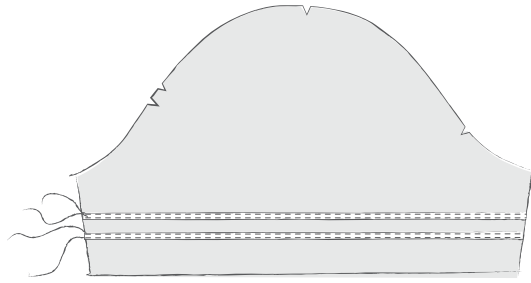
I love nautical elements on a dress, and the Square Collar is a great place to use white ribbon trim for a sailor-style collar. After constructing the collar, but before basting it to the bodice, pin and stitch ribbon trim to it. Place $\frac{1}{4}$ -in-wide (6-mm) grosgrain ribbon $\frac{1}{2}$ in (1.3 cm) away from the folded edge of the collar, turning under the cut end of the ribbon. Edgestitch along the ribbon's edges.



Place another row of ribbon $\frac{1}{2}$ in away from the first, overlapping the ribbons at the collar's corners.

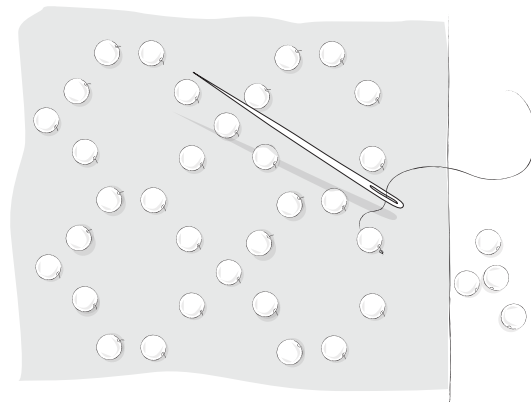


You may wish to echo this ribbon detail on the short sleeves. Place and stitch the ribbon trim before sewing the sleeves; it's easier to stitch the trim when the sleeve is flat. Place one row of ribbon $\frac{1}{2}$ in from the sleeve's hemline and stitch in place, edgestitching on either side of the ribbon. Place and stitch a second row of ribbon $\frac{1}{2}$ in above the first row. Sew and hem the sleeve as usual.



SEWING WITH BEADED FABRICS

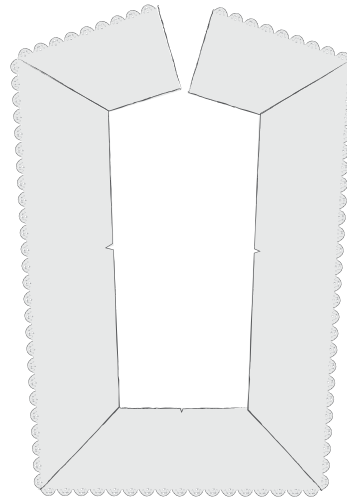
Bishop sleeves look especially beautiful made from embellished or beaded fabrics. Though these fabrics can be painstaking to sew, the dramatic results are worth it. First, cut the sleeve as usual, using inexpensive shears because the beads will quickly dull your blades or cause nicks (I use paper scissors). Remove all beading in the seam allowances and save the beads for later, in case you need to fill in any bare spots. Then hand-stitch through the edges of the beading near the seam allowances to reinforce. To do this, thread a hand-sewing needle, anchor the thread in the fabric, and stitch through the beads around the seam allowances, following the beading pattern with your needle. Periodically anchor the thread in the fabric. Next, sew the sleeves as usual, using a zipper foot on your machine to stitch close to the beading, but not on top of it. Fill in any bare spots in the fabric's beading by hand-sewing on the preserved beads.



SEWING WITH SCALLOP-EDGE FABRICS

Eyelet and other embroidered fabrics often come with a finished scallop edge that you can place along the straight edge of a pattern piece. A lovely embroidered edge would work well on the Yoke Skirt and Short Sleeves, for example. Place the fabric's embroidered edge along the hemline (rather than the cutting line at the bottom of the pattern piece) and cut. Sew the pieces together as usual. No hemming is required.

A scallop edge could also work along the bottom edge of the Square Collar. Place the scallop edge along the foldline in the center of the Square Collar pieces (front, sides, and back). Sew the collar as one layer only, matching notches at the mitered corners. When cutting the collar piece, plan your cutting layouts so that the scallops look even at the mitered corners.



SEWING WITH BORDER PRINTS

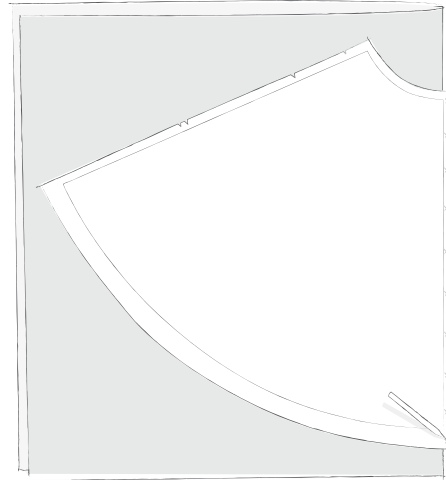
A border print has a design that runs along the fabric's selvage. Like scallop-edge fabrics, border prints are generally only placed along the straight edge of a pattern piece. A border would look gorgeous placed along the bottom of the Yoke Skirt, for instance. Make sure that you leave enough room for a hem allowance below the border's print.



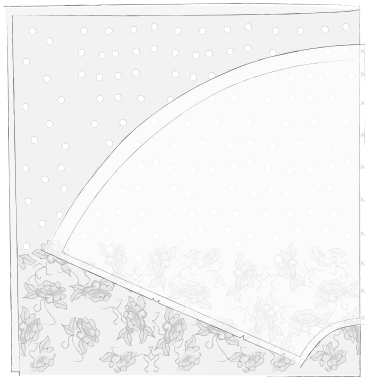
Some border prints, like those I've designed for my collections, have a large border along one selvage and a small border along the opposite selvage. The large border works well for skirt hems, while the small border looks lovely placed along a sleeve hem or even the Square Collar.

MORE DESIGN IDEAS

- Eliminate the center-front seam on the Flared Skirt and cut on the straight grain if desired. Simply remove $\frac{5}{8}$ in (1.5 cm) from the pattern piece's center front, and then cut the pattern on the fold. You will also want to cut the skirt back on the straight grain if you make this change.



- With the Flared Skirt cut on the straight grain, you may also cut border prints, stripes, or plaids so that they are positioned in an upside-down arc on the skirt.



- Use a sheer fabric for any or all dress pieces. For modesty/opacity in key areas like the skirt and bodice, you can underline the sheer fabric. Cut the pattern pieces a second time in underlining fabric, and then baste the sheer fabric and underlining together $\frac{1}{2}$ in from the cut edges. Sew the underlined fabric as usual, treating the two layers as one. Consider using a sheer eyelet or lace underlined in a contrasting color for a pretty effect.

NOTES



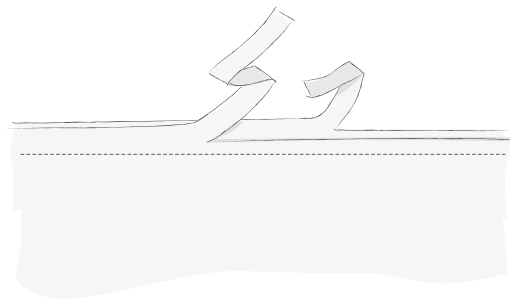
GLOSSARY

All-in-one Facing: a facing for sleeveless garments that finishes the neckline and armholes.

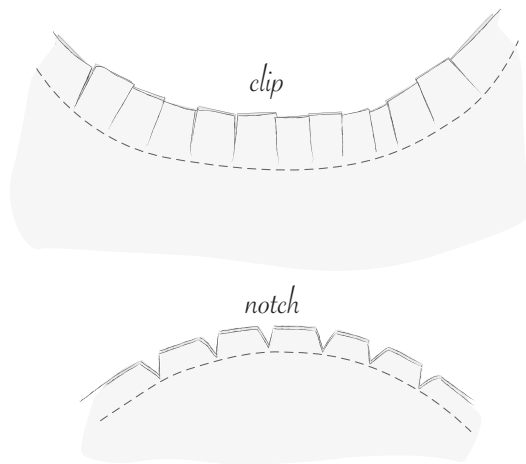
Basting: a temporary stitch that holds pieces in place before sewing permanently. Basting is done with a long stitch by hand or by machine.

Edgestitching/Topstitching: machine stitching that is visible from the right side of a garment, used to secure two layers of fabric or as decoration. Edgestitching is done just next to a fold of fabric (like on a hem's fold), while topstitching is done at least $\frac{1}{4}$ in away from a fold or seam.

Grading: the process of cutting two seam allowances to different widths. This creates a beveled edge so that a ridge doesn't show through to the right side of the garment.

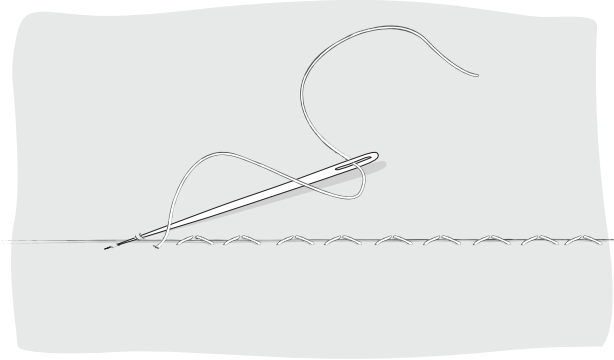


Notching/clipping: to ensure that a neckline or other curved area of a garment does not bunch or pucker, notching and clipping is essential. After grading seam allowances, clip into any inner curves and notch any outer curves. The more curved the seam is, the closer together notches or clips should be. Clips are a simple snip into the fabric; notches are small triangle-shaped cutouts.



Pivot: turning a corner with machine stitching. Stitch toward the corner's pivot point, usually placed $\frac{5}{8}$ in (1.5 cm) away from the raw edge, using the hand-wheel as you get closer. Stop with the needle all the way down in the fabric at the pivot point, lift the presser foot, and swivel the fabric so that it is now positioned in the new stitching direction. Lower the presser foot and start stitching again.

Slipstitch: a hand stitch for finishing details. This stitch comes in handy when you are stitching a fold to a flat layer, like a facing to a zipper tape. To sew a slipstitch, thread a hand-sewing needle and knot the end. Anchor the thread by



pulling it up through the folded fabric edge. Working right to left, take a tiny stitch in the garment fabric (just pick up a thread or two with the needle) about $\frac{1}{4}$ in (6 mm) to the left above the fold; pull the thread through. Insert the needle back into the fold about $\frac{1}{4}$ in to the left and slide the needle inside the fold for about $\frac{1}{4}$ in, then bring it back out. Take a tiny stitch in the garment about $\frac{1}{4}$ in to the left above the fold. Continue alternating stitches inside the fold and in the garment fabric, positioning the stitches so they are between the two layers.

Staystitching: a line of permanent stitching, sewn just inside the seamline, that provides stability and prevents an area from stretching or distorting.

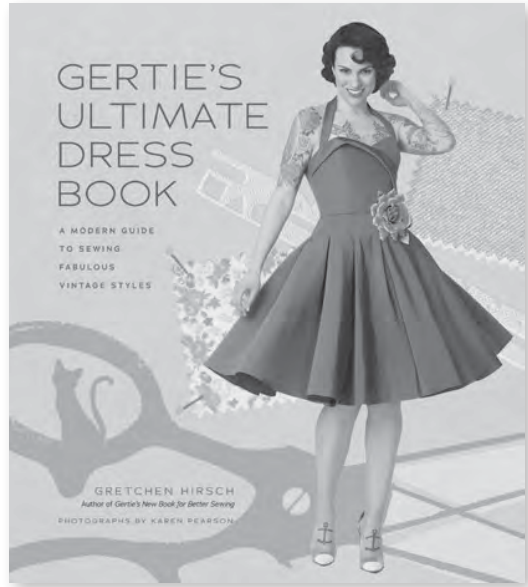
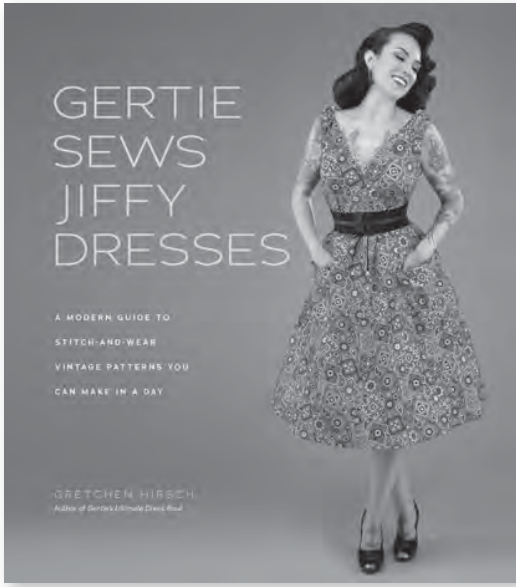
Stitch in the Ditch: a line of stitching, sewn from the right side of the garment, used in this pattern to secure the all-in-one facing to the garment. To stitch in the ditch, align your needle exactly with the seamline on the RS, making sure that you are catching your facing underneath. Your stitches will disappear inside the seamline and become undetectable.

Understitch: an essential step that helps a facing or lining roll to the inside of a garment around the neckline, producing a clean finish. To understitch, flip the facing or lining away from the garment so that it lays atop the seam allowances. Stitch about $\frac{1}{16}$ in (1.5 mm) to $\frac{1}{8}$ in (3 mm) to the right of the seamline, sewing through the seam allowances beneath the facing.

MORE FROM GERTIE



Purchase more patterns at www.CharmPatterns.com.



Read all of Gretchen Hirsch's books to advance your sewing skills! Available to purchase or order from your favorite bookseller.

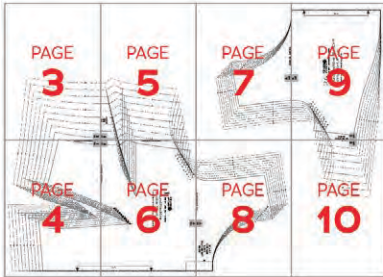
PATTERN PIECE LOCATION GUIDE

Here is a list to help you locate pattern pieces on the letter-size tiled pages and AO pattern sheets.
The tiled pieces and AO sheets are included as separate pdf files as part of this digital pattern.

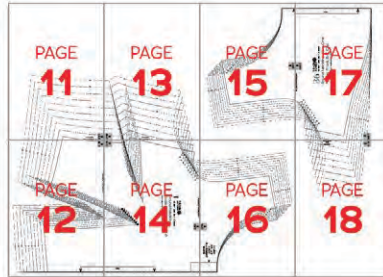
PC#	Piece Name	Tiled	AO	PC#	Piece Name	Tiled	AO
Round Neckline, A cup				Square Neckline, all cup sizes			
1	Round Neckline Bodice Front, A cup	3-6, 8	1	4	Square Neckline Bodice Back	97-102	3
36	Round Neck All-In-One Facing Front, A cup	7, 9-10	9	24	Square Collar Front	107-108	3
Round Neckline, B/C cup				25	Square Collar Side	109-112	7
1	Round Neckline Bodice Front, B/C cup	11-14, 16	1	26	Square Collar Back	108-109	3
36	Round Neck All-In-One Facing Front, B/C cup	15, 17-18	9	29	Square Neck Facing Front	104, 106	6
Round Neckline, D/DD cup				30	Square Neck Facing Back	99, 101	6
1	Round Neckline Bodice Front, D/DD cup	19-22, 24	1	35	Square Neck All-In-One Facing Back	103-106	5
36	Round Neck All-In-One Facing Front, D/DD cup	23, 25-26	9	Short Sleeve			
Round Neckline, F/G cup				5	Short Sleeve	172-177	4
1	Round Neckline Bodice Front, F/G cup	27-30, 32	1	6	Short Sleeve Cuff	173, 175, 177	2
36	Round Neck All-In-One Facing Front, F/G cup	31, 33-34	11	7	Short Sleeve Facing	173, 175, 177	1
Round Neckline, H cup				Three-Quarter Sleeve			
1	Round Neckline Bodice Front, H cup	35-38, 40	2	8	Three-Quarter Sleeve	178-179, 181-182, 184-185	4
36	Round Neck All-In-One Facing Front, H cup	39, 41-42	11	9	Three-Quarter Sleeve Facing	180, 183, 186	1
Round Neckline, all cup sizes				Elbow-Length Bishop Sleeve			
2	Round Neckline Bodice Back	43-48	2	10	Elbow-Length Bishop Sleeve	196-204	4
27	Scarf Collar	53-56	4	11	Elbow-Length Bishop Sleeve Band	201, 204	3
28	Scarf Collar Knot	55	4	Long Bishop Sleeve			
31	Round Neck Facing Front	43, 45	4	12	Long Bishop Sleeve	185-198	5
32	Round Neck Facing Back	45, 47	7	13	Long Bishop Sleeve Binding	183, 186	2
37	Round Neck All-In-One Facing Back	49-52	5	Trumpet Skirt			
Square Neckline, A cup				14	Trumpet Skirt Front	160-163	6
3	Square Neckline Bodice Front, A cup	57-60, 62	2	15	Trumpet Skirt Side Front	154-159	6
34	Square Neck All-In-One Facing Front, A cup	61, 63-64	8	16	Trumpet Skirt Back	166, 169-171	6
Square Neckline, B/C cup				17	Trumpet Skirt Side Back	163-168	6
3	Square Neckline Bodice Front, B/C cup	65-68, 70	2	Yoke Skirt			
34	Square Neck All-In-One Facing Front, B/C cup	69, 71-72	8	18	Yoke Skirt Center Front	115-116, 119-120, 123-124, 127-128, 131-132	7
Square Neckline, D/DD cup				19	Yoke Skirt Lower Front	113-115, 117-119, 121-123, 125-127, 129-131	7
3	Square Neckline Bodice Front, D/DD cup	73-76, 78	3	20	Yoke Skirt Back Yoke	120, 124, 128	5
34	Square Neck All-In-One Facing Front, D/DD cup	77, 79-80	8	21	Yoke Skirt Lower Back	129-131, 133-153	8-9
Square Neckline, F/G cup				Flared Skirt			
3	Square Neckline Bodice Front, F/G cup	81-84, 86	3	22	Flared Skirt Front	205-207, 212-217, 223-228, 233-237	10-11
34	Square Neck All-In-One Facing Front, F/G cup	85, 87-88	9	23	Flared Skirt Back	208-211, 217-222, 228-232, 237-240	10-11
Square Neckline, H cup				Pocket			
3	Square Neckline Bodice Front, H cup	89-92, 94	3	33	Pocket	1-2	4
34	Square Neck All-In-One Facing Front, H cup	93, 95-96	9				

PATTERN PIECES TILING MAPS

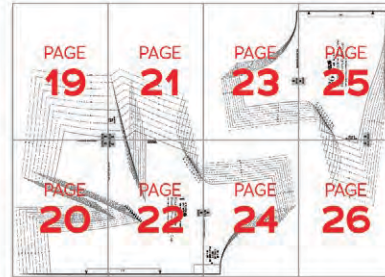
ROUND NECKLINE



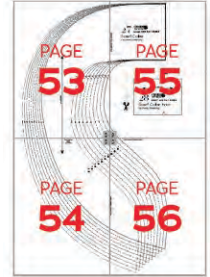
Round Neckline, A Cup
pages 3-10



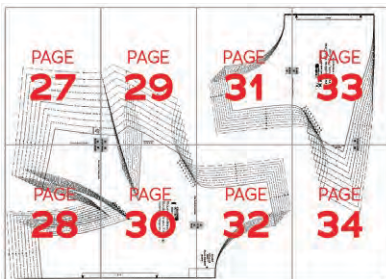
Round Neckline, B/C Cup
pages 11-18



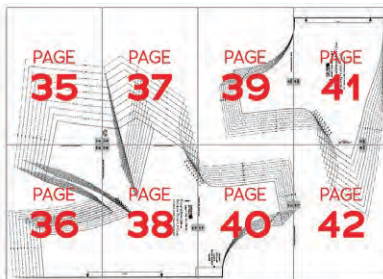
Round Neckline, D/DD Cup
pages 19-26



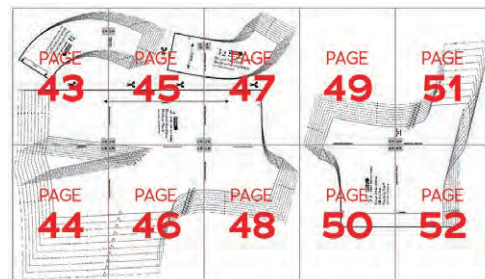
Scarf Collar
pages 53-56



Round Neckline, F/G Cup
pages 27-34

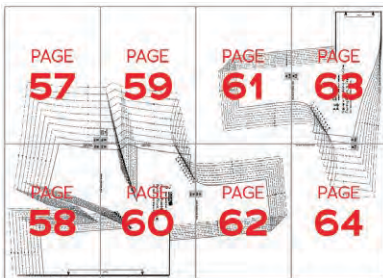


Round Neckline, H Cup
pages 35-42

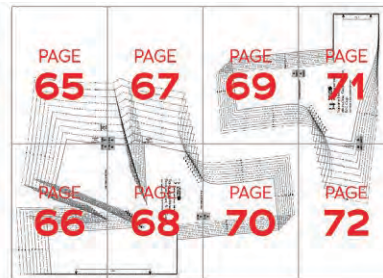


Round Neckline, all cup sizes
pages 43-52

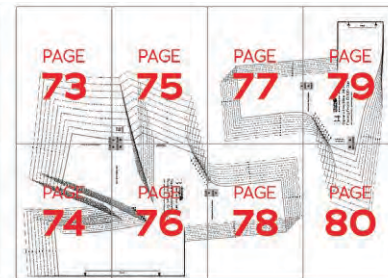
SQUARE NECKLINE



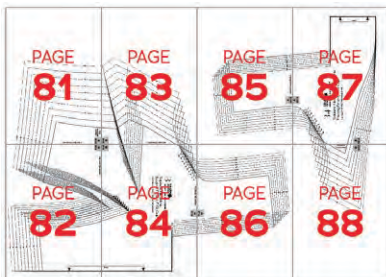
Square Neckline, A Cup
pages 57-64



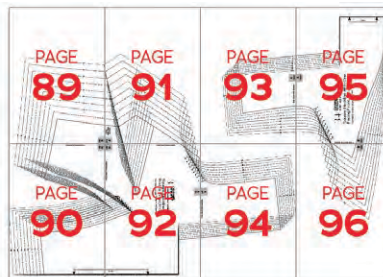
Square Neckline, B/C Cup
pages 65-72



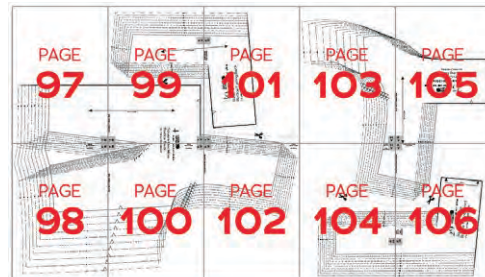
Square Neckline, D/DD Cup
pages 73-80



Square Neckline, F/G Cup
pages 81-88



Square Neckline, H Cup
pages 89-96

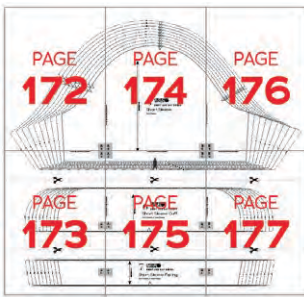


Square Neckline, all cup sizes
pages 97-106

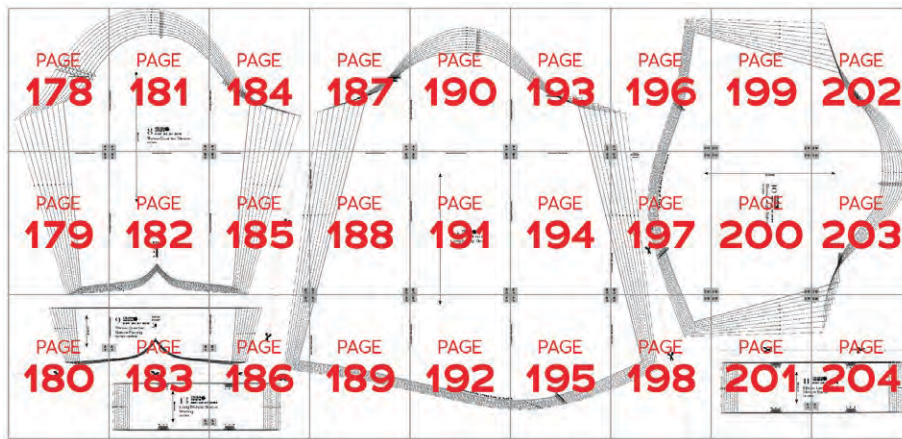


Square Collar
pages 107-112

SLEEVES



Short Sleeve
pages 172-177

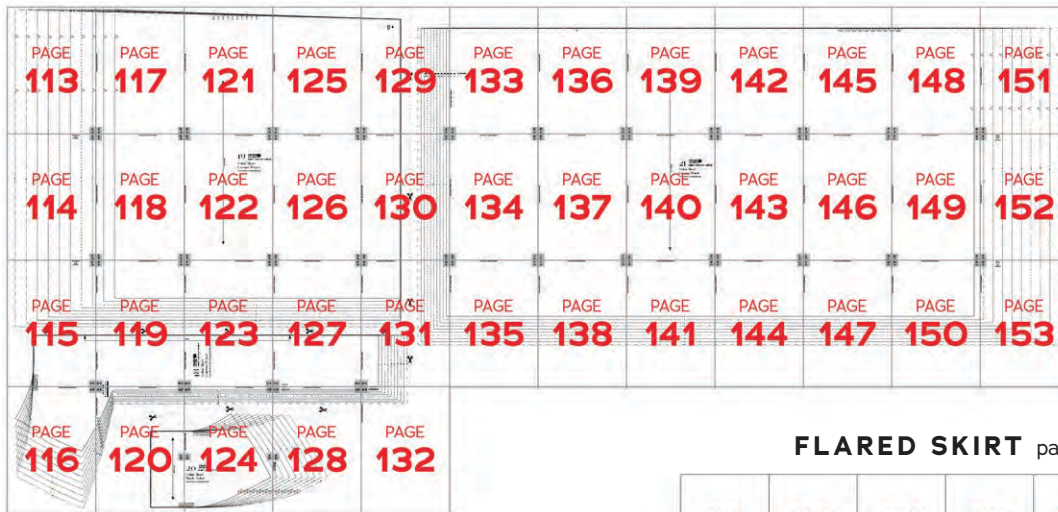


Three-Quarter Sleeve
pages 178-186

Long Bishop Sleeve
pages 183-198

Elbow Length Bishop Sleeve
pages 196-204

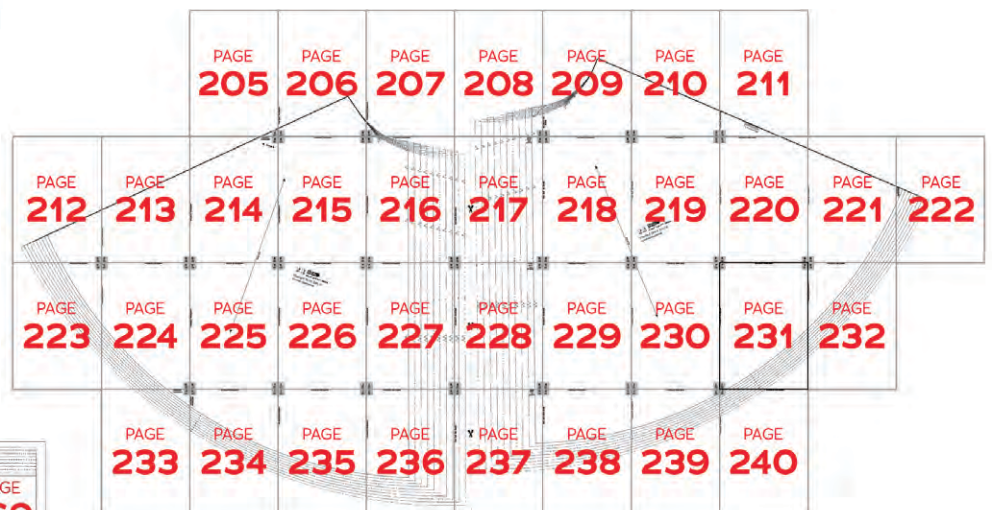
YOKE SKIRT pages 113-153



POCKET
pages 1-2



FLARED SKIRT pages 205-240



TRUMPET SKIRT pages 154-171

