



A PATREON
EXCLUSIVE
PATTERN

© 2023 Charm Patterns
by Gertie



Starburst

SKIRT



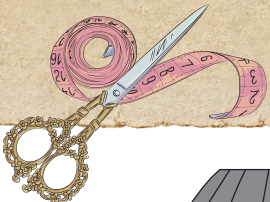


I am delighted to share this Starburst Skirt in our full size range with you as a bonus for January's Society of Charm members.

This skirt is a variation of the Starburst Dress, which was offered in February 2020 exclusively to our first-month Patreon supporters. It only seems fitting to share this size-inclusive pattern now as part of Society of Charm's look back to the roots of classic Charm.

This is a very special pattern, and I'm thrilled to bring it back for just a short time. Please enjoy this gift, and thank you for supporting the Society of Charm!

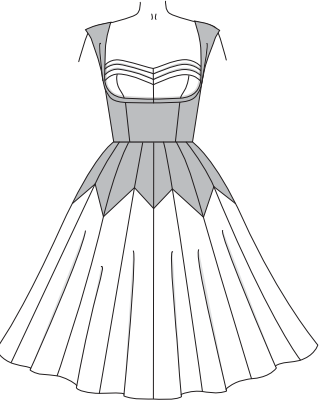
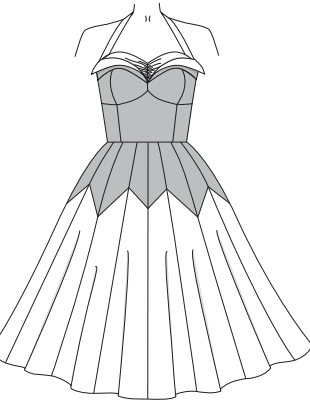
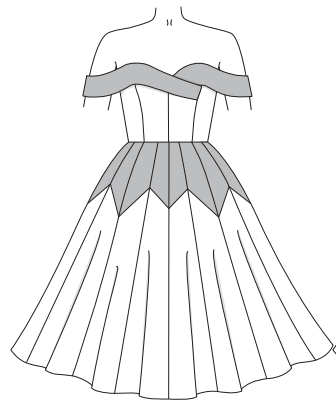
xxxxx, Gertie



Landis Bodice

Lana Dress Bodice

Liz Dress Bodice



Make a matching bag with our new [Secrets Clutch pattern!](#)





SIZE CHART

The Starburst Skirt is sized in women's US 2–20 and 18–34. Use your waist measurement in the chart to pick your size. The skirt only needs to fit in the waist, as the hip is very full.

Not sure which size range to choose? Read more about our [two size ranges here!](#)

SIZES 2-20	2	4	6	8	10	12	14	16	18	20
Waist	24 in 61 cm	26 in 66 cm	28 in 71.1 cm	30 in 76.2 cm	32 in 81.3 cm	34 in 86.4 cm	36 in 91.4 cm	38 in 96.5 cm	40 in 101.6 cm	42 in 106.7 cm

SIZES 18-34	18	20	22	24	26	28	30	32	34
Waist	40 in 101.6 cm	42 in 106.7 cm	44 in 111.8 cm	46 in 116.8 cm	48 in 121.9 cm	50 in 127 cm	52 in 132.1 cm	54 in 137.2 cm	56 in 142.2 cm

FIT NOTES

The pattern is designed to fit with between ½ to ¾ inches (in) (1.3 to 1.9 cm) of ease at the waist. The hip is very full. See the charts below for finished garment measurements.

Finished Measurements

Sizes 2-20	2	4	6	8	10	12	14	16	18	20
Waist	24.5 in 62.2 cm	26.5 in 67.3 cm	28.5 in 72.4 cm	30.5 in 77.5 cm	32.5 in 82.6 cm	34.5 in 87.6 cm	36.5 in 92.7 cm	38.5 in 97.8 cm	40.5 in 102.9 cm	42.5 in 108 cm

Skirt sweep for size 8 is 214.75 in.

Sizes 18-34	18	20	22	24	26	28	30	32	34
Waist	40.75 in 103.5 cm	42.75 in 108.6 cm	44.75 in 113.7 cm	46.75 in 118.7 cm	48.75 in 123.8 cm	50.75 in 128.9 cm	52.75 in 134 cm	54.75 in 139.1 cm	56.75 in 144.1 cm

Skirt sweep for size 24 is 221.5 in.

Fabric Notes

We recommend light- to medium-weight wovens with some body and crispness. Suitable fabrics include: cotton sateen, poplin, oxford, seersucker, chambray, madras, broadcloth, eyelet, and shirtings; and linen and linen blends. Alternatively, for a more glamorous finished garment, silk taffeta, dupioni, and shantung may also be used.

Materials & Notions

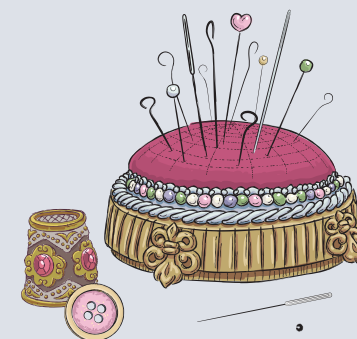
- Fabric for the skirt
- Contrast fabric for the starburst
- Thread to match
- Zipper of appropriate length (7 in for skirt)

Resources

Here are some of the fabrics I used for the samples. There are lots of places to purchase fabric, so this is solely a guide you can use as a reference:

[Michael Miller Dumb Dot quilting cotton](#)

[Rose Taffeta \(alternate colorway\)](#)



REQUIRED YARDAGE & CUTTING LAYOUTS

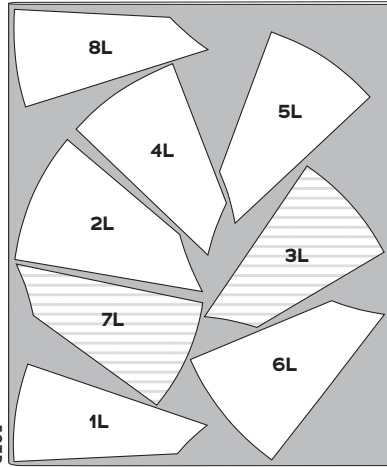
NOTE: All pattern pieces are shown in a “without nap” layout. You may need additional yardage for directional prints, stripes, plaids, and other prints that need to be matched across seamlines.

Main Fabric for the Skirt Lower Section

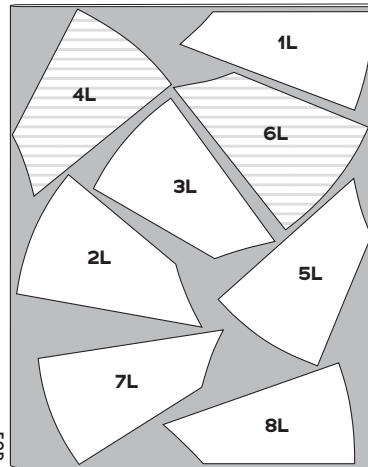
(1L, 2L, 3L, 4L, 5L, 6L, 7L, 8L)

	Sizes 2-10		Sizes 12-20	
	45 in	3 ³ / ₈ yds 3.1 m	3 ⁷ / ₈ yds 3.5 m	
60 in	2 ⁷ / ₈ yds 2.6 m	3 ¹ / ₈ yds 2.8 m		

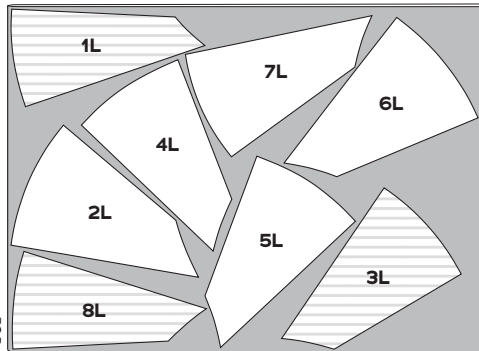
	Sizes 18-24		Sizes 26-34	
	45 in	3 ⁵ / ₈ yds 3.3 m	3 ⁵ / ₈ yds 3.3 m	
60 in	2 ³ / ₄ yds 2.5 m	2 ³ / ₄ yds 2.5 m		



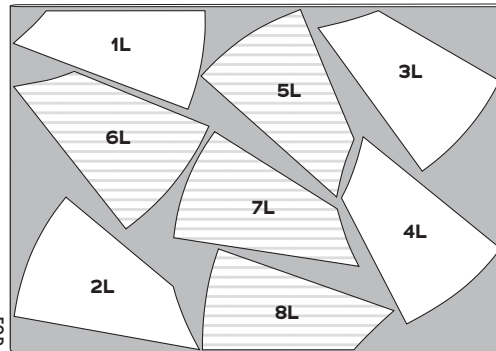
60 in, sizes 2-20



60 in, sizes 18-34



45 in, sizes 2-20



45 in, sizes 18-34

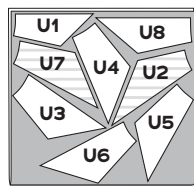
The main fabric for the Skirt Lower Section is shown on a crosswise layout. The full width of the fabric is opened out and a fold is made perpendicular to the selvages.

Contrast Fabric for the Skirt Upper Starburst Section

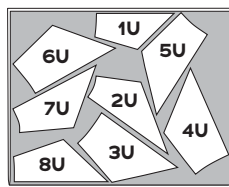
(1U, 2U, 3U, 4U, 5U, 6U, 7U, 8U)

	Sizes 2-10		Sizes 12-20	
	45 in	3/4 yd .7 m	7/8 yd .8 m	
60 in	5/8 yd .6 m	5/8 yd .6 m		

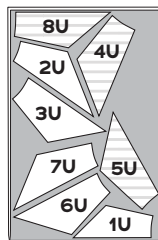
	Sizes 18-24		Sizes 26-34	
	45 in	7/8 yd .8 m	1 yd .9 m	
60 in	5/8 yd .6 m	3/4 yd .7 m		



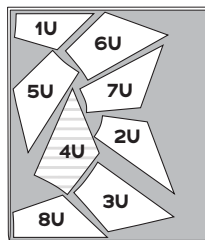
45 in, sizes 2-20



45 in, sizes 18-34



60 in, sizes 2-20



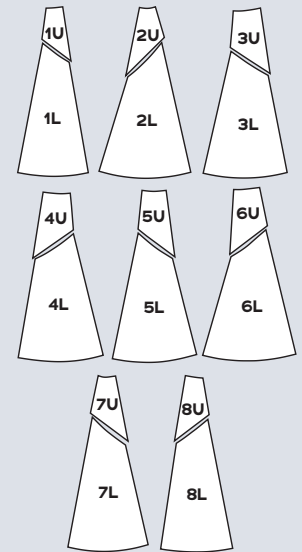
60 in, sizes 18-34

The contrast fabric for the Skirt Upper Starburst Section is cut as usual, with the fold parallel to the selvedge.

Pattern Pieces

The skirt pieces are labeled **1U-8U** (the U stands for Upper) and **1L-8L** (the L stands for Lower).

- Cut 2 fabric of each L (Lower) pattern piece.
- Cut 2 contrast fabric of each U (Upper) pattern piece.



KEY TO LAYOUTS

- Right side of pattern piece
- Wrong side of pattern piece

Be sure to note whether the pieces are cut on a double or single layer of fabric. For a double layer, there will be a note indicating FOLD on the layout.

SEWING INSTRUCTIONS

BEFORE SEWING

Transferring marks: use dressmaker's tracing paper and a tracing wheel to transfer all pattern markings to the wrong side (WS) of your fabric. Mark pattern notches by snipping into the seam allowance with the tip of your scissors.

NOTES

- 5/8-in (1.5 cm) seam allowances are included on all pattern pieces, except where otherwise noted.
- Press your stitching lines after every step, even when not specified in the instructions.
- You may finish your seams with a serger or zigzag stitch. Pinking is the easiest seam allowance finish and is perfectly vintage-appropriate.
- If you wish to add a waistband to the Starburst Skirt, use the waistband from the Loretta Shorts or Charm Circle Skirt and follow that pattern's instructions.
- If you'd like to line the Starburst Skirt, use the Three-Quarter Circle Skirt from the Lamour Dress pattern or the free Charm Circle Skirt pattern.

TIPS

- The skirt pieces are labeled 1U–8U (the U stands for Upper) and 1L–8L (the L stands for Lower). 1U gets sewn to 1L, and so on to create the skirt gores. Then the gores are sewn together. See the diagram on page 6.
- Gore 1 is center front and gore 8 is center back.
- To avoid confusing the pieces, do not remove the paper pattern pieces from the fabric until you're ready to sew that specific piece. If you want to serge your seam allowances before sewing, pin the pattern pieces back on after sewing to avoid confusion.
- [Watch the video](#) to see how the skirt comes together!

SEW THE SKIRT

Skirt Front

- 1. Assemble center front (CF) gores:** pin 1U pieces to 1L pieces, RS together, matching notches. Stitch. Press seam open.
- 2. Sew CF unit:** pin the two 1U/1L units RS together, matching notches. Stitch. Press seam open. TIP: place a pin at the CF seam to help you keep track of the CF of the skirt.
- 3. Assemble next gores:** pin 2U pieces to 2L pieces, RS together, matching notches. Stitch. Press seam open.

4. Sew front gores to skirt unit: pin the two 2U/2L gore units to either side of the front center gore unit, RS together, matching notches. Stitch. Press seams open.

5. Continue to assemble remaining front gores: repeat the previous two steps for the 3U/3L and 4U/4L gore units, attaching each to the front center gore unit in turn.

Skirt Back

- 1. Assemble center back (CB) gores:** pin 8U pieces to 8L pieces, RS together, matching notches. Stitch. Press seam open.
- 2. Sew CB unit:** pin the two 8U/8L units RS together, matching notches. Stitch, leaving open above the



MIX & MATCH

THIS PATTERN IS PART OF THE LAMOUR SERIES

The Starburst Skirt can be sewn as a separate or as the skirt for any of the Lamour-series bodices to create a dress. Sew the bodice following the pattern's instructions. Join the bodice to the skirt at the waistline and press waistline seam toward the bodice. Insert the zipper and finish the garment according to the instructions.

See the full list of mix-and-match options for this series at CharmPatterns.com/mix-and-match.

zipper circle. Fuse stay tape or a 1¼-inch-wide strip of interfacing to the zipper opening seam allowances. Press seam open.

3. Assemble next gores: pin 7U pieces to 7L pieces, RS together, matching notches. Stitch. Press seam open.

4. Sew back gores to skirt unit: pin the two 7U/7L gore units to either side of the back center gore unit, RS together, matching notches. Stitch. Press seams open.

5. Continue to assemble remaining back gores: repeat the previous two steps for the 5U/5L and 6U/6L gore units, attaching each to the back center gore unit in turn.

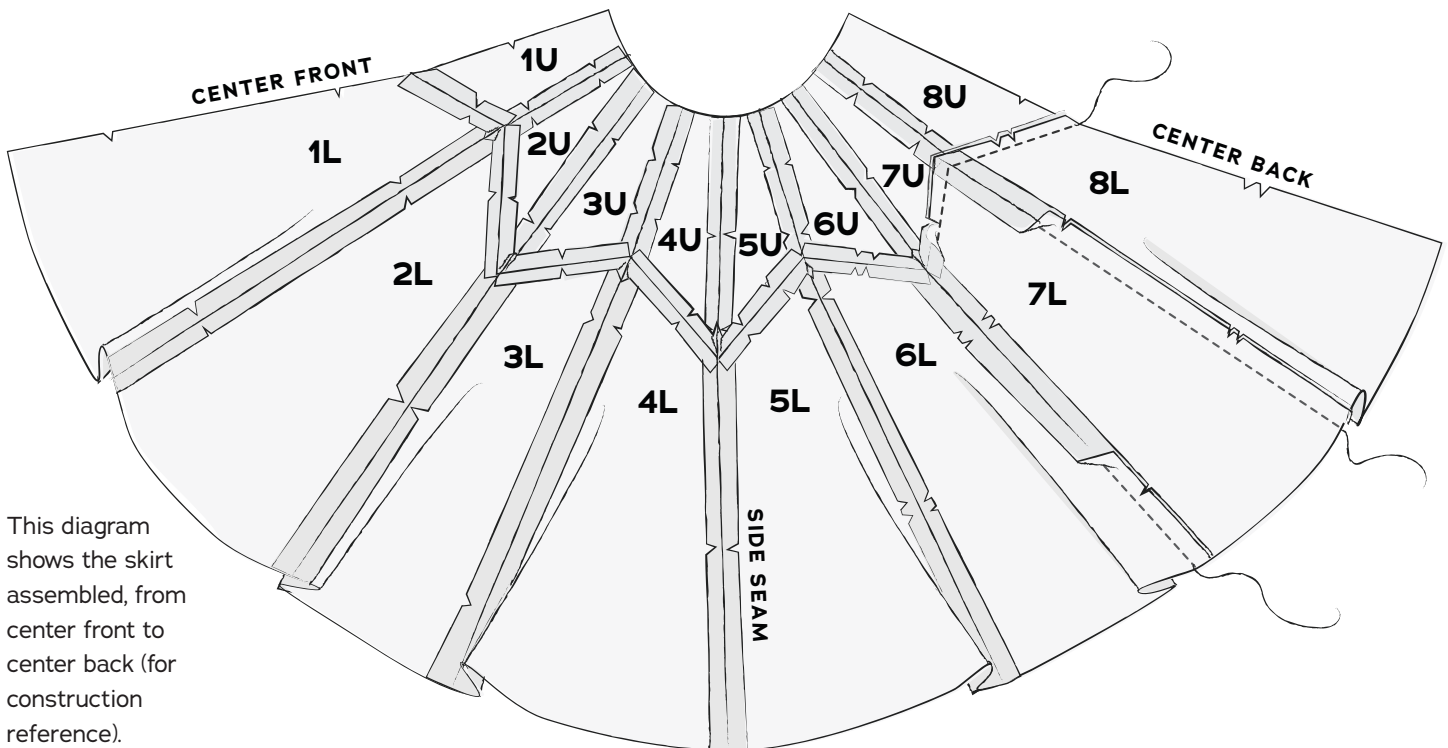
SKIRT SIDE SEAMS

1. Sew skirt side seams: pin skirt front unit to skirt back unit, RS together, matching notches. Stitch. Press seam open.

For a skirt, follow the instructions on your chosen waistband pattern to attach the waistband and zipper. Hem the skirt and finish the garment according to the pattern instructions.

For a dress, sew the bodice following the pattern instructions. Join the skirt to the bodice at the waistline and press waistline seam toward the bodice. Insert zipper, hem the skirt, and finish the garment according to the instructions.

Enjoy your swirly new Starburst Skirt!



This diagram shows the skirt assembled, from center front to center back (for construction reference).



PATTERN PIECE LOCATION GUIDE

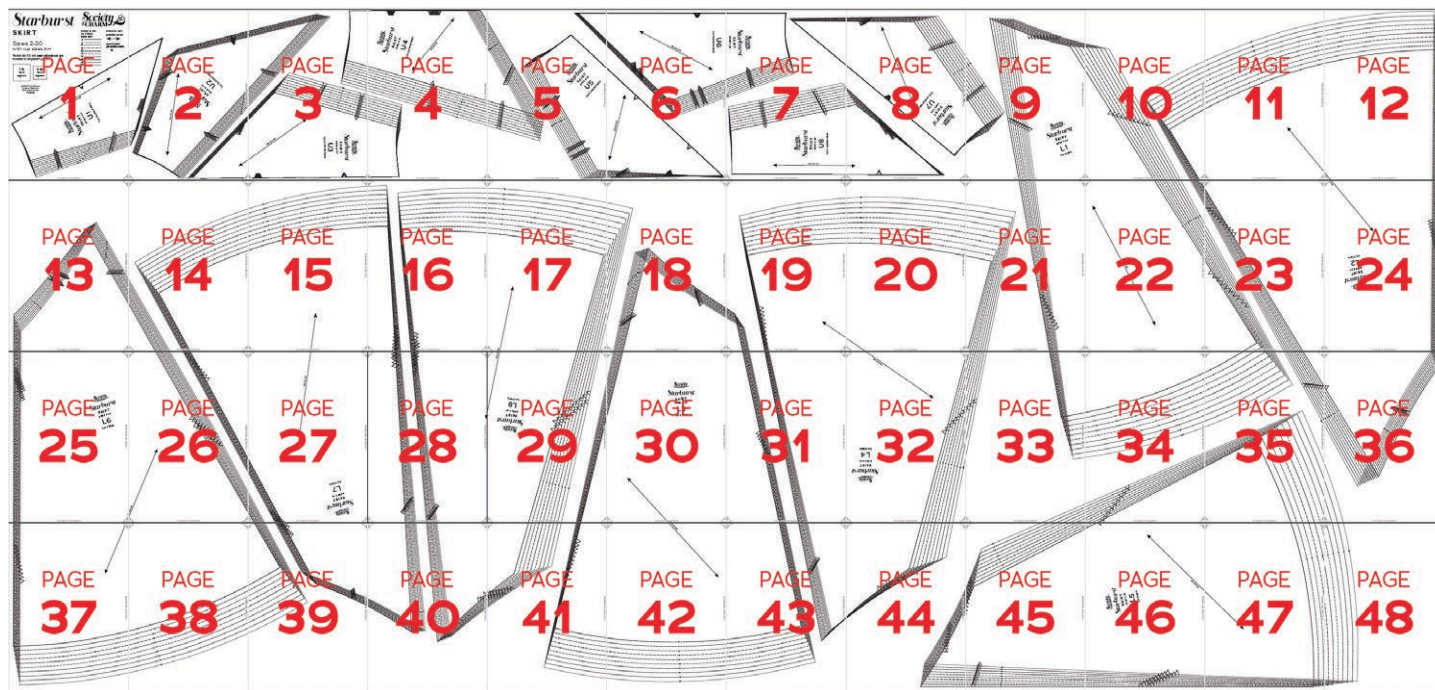
Here is a list to help you locate the pattern pieces on the letter-size tiled pages and A0 pattern sheets.
The tiled pieces and A0 sheets are included as separate pdf files as part of this digital pattern.

PC#	SIZES 2-20		SIZES 18-34	
	Tiled	A0	Tiled	A0
1U	1-2	1	1-2	1
2U	2-3	1	2-4	1
3U	2-4	1	9-10	1
4U	3-5	1	6-7	1
5U	5-6	1	4-5	2
6U	5-7	1	7-8	2
7U	7-9	1	23, 34-35	2
8U	7-8	1	2-4	2
1L	9-10, 21-23, 33-35	1	11-12, 23-24, 36	1
2L	10-12, 22-24, 35-36	1	17-19, 29-31, 41-42	1
3L	18-19, 29-31, 41-43	2	14-16, 27-28, 39-40	1
4L	19-21, 31-33, 43-44	2	21-23, 33-35, 45-46	1
5L	33-36, 44- 48	2	13-14, 25-27, 37-39	2
6L	13-14, 25-27, 37-39	3	19-20, 30-32, 42-44	2
7L	14-16, 26-28, 39-40	3	34-36, 45-48	2
8L	16-18, 28-29, 40-41	3	37-40, 49-51	2

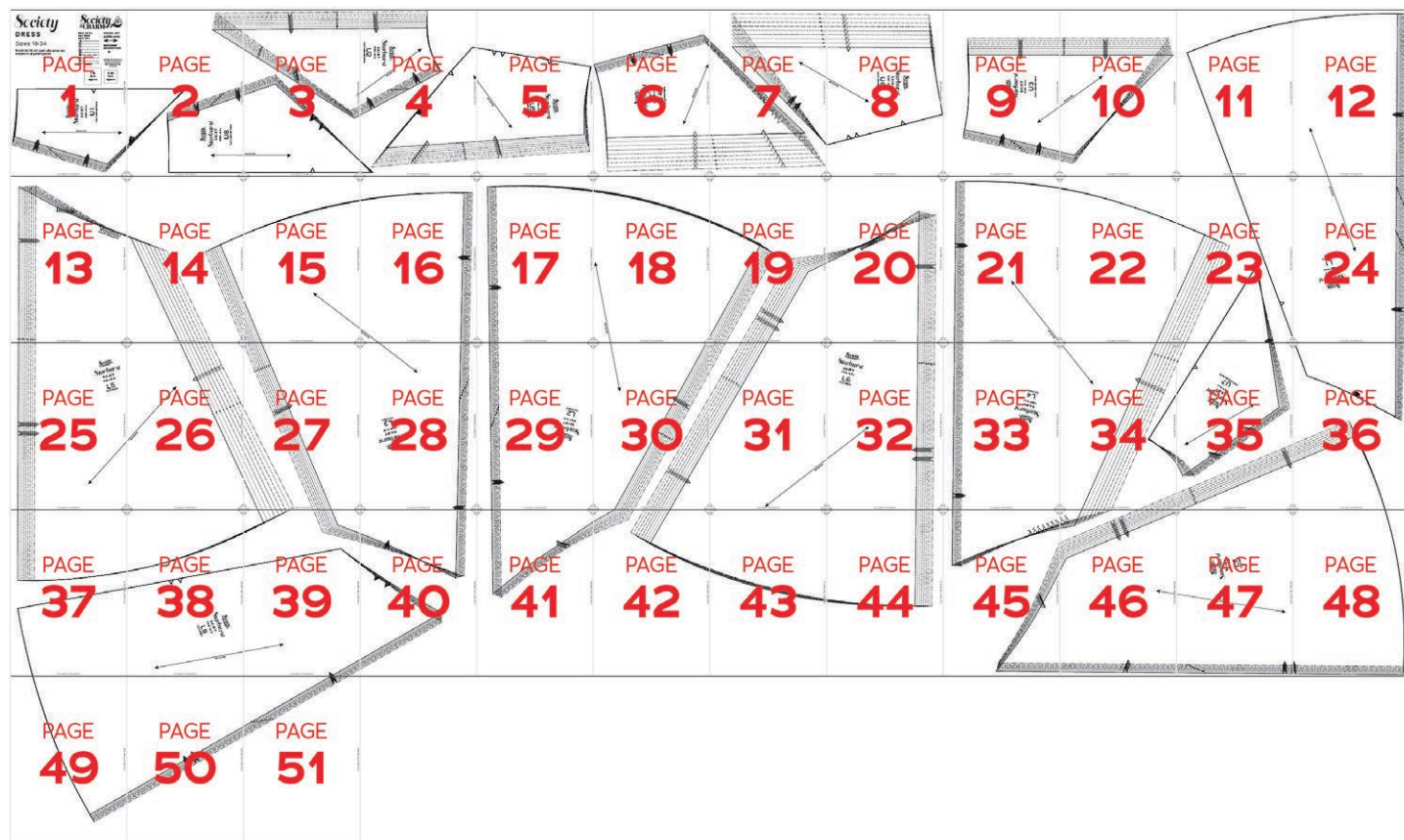


TILING MAPS

Sizes 2-20



Sizes 18-34



HOW TO USE THIS PATTERN

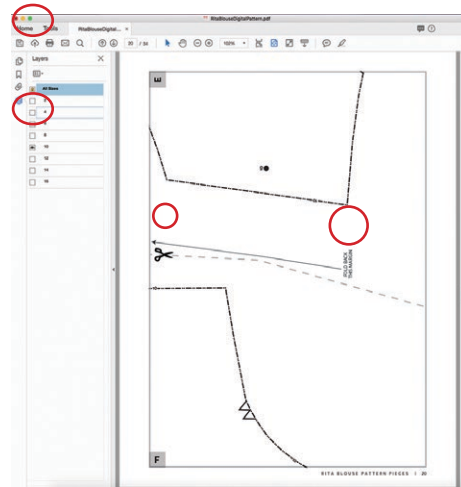
The pattern pieces are tiled so you can print them on Letter (8½” x 11”) or A4 size paper. You can also send the A0 pattern sheet PDF to a local or online printer (like www.pdfplotting.com) to print on large sheets (36” x 48” for U.S. or AO for international).

This pattern includes size layers. To get the best results, open either the Tiled or A0 pattern pieces PDF in Acrobat Reader.

Open the Layers Palette (View > Show/Hide > Navigation Panes > Layers) and hide all of the layer(s) except for

the ones you want to print by clicking on the eye icon.

The All Sizes layer has general pattern information and will always print.



WORKING WITH THE TILED PIECES

Go to File > Print and change the page range to the pages you need for the pieces you’ve chosen (see Pattern Pieces Printing Index). Make sure the Page Sizing settings to 100% or Actual Size. Test this after printing by measuring the 1” test box on the first page of the bodice pattern pieces.

Cut apart any pattern pieces that share a page by cutting on the gray long dashed lines. Then fold back the page margins on each page as directed.

Tape the pages together, butting up the folded page edges with the gray margin lines, matching up the letters in gray boxes.

MORE FROM GERTIE

On Instagram: Stay in the loop and get inspired.

On YouTube: Learn beginner and advanced sewing skills and techniques through my tutorials, watch episodes of my Gertie’s World series, and join regular live streams.

On Patreon: Access monthly patterns and tutorial videos.

At CharmPatterns.com: Shop my sewing patterns and accessories.





MIX & MATCH

THE LAMOUR SERIES

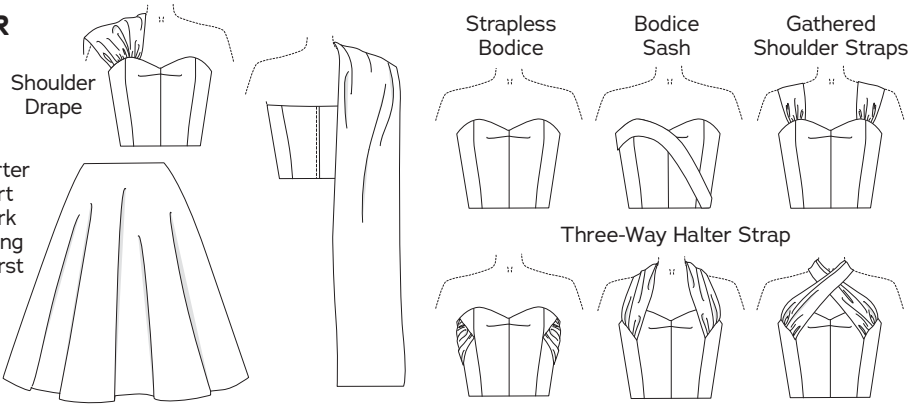
The following patterns can be interchanged with the Starburst Skirt.

[Find more at CharmPatterns.com/mix-and-match](http://CharmPatterns.com/mix-and-match)



LAMOUR DRESS

Three-Quarter Circle Skirt (would work well for lining the Starburst Skirt)

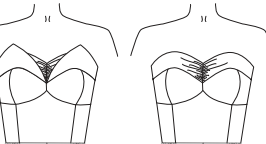


LANA DRESS

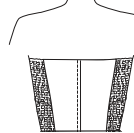
Bodice with straight waist, bra petal & bra petal

Bodice with straight waist, bra upper & halter strap

Bodice with straight waist, bra upper & petal no petal



Bodice with shirred back



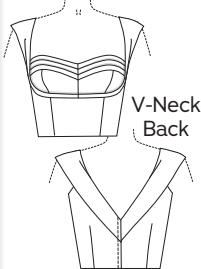
CIRCLE SKIRT

would work well for lining the Starburst Skirt



LIZ DRESS

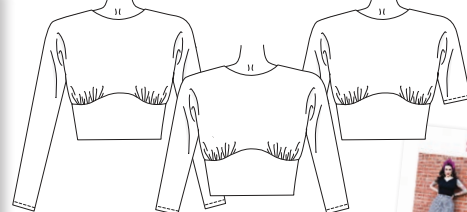
Bodice with Shelf Bust and Pleated Bra Inset



PEGGY BODICE



High-neckline Bodice with 3 sleeve lengths and underarm gusset



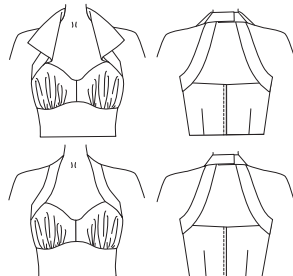
LORETTA

Foldover neckline for any L-series bodice



LAS VEGAS HALTER TOP

with Collar and Shoulder Straps or Collarless option



LANDIS BODICE

Bodice with Shoulder Bands or Strapless option

